

# Regional Water Providers Consortium

## Evolving Approaches to Public Outreach



REGIONAL WATER PROVIDERS CONSORTIUM



# Members and Regional Water Sources



## 25 WATER PROVIDER MEMBERS

- Beaverton, City of
- Clackamas River Water
- Cornelius, City of
- Forest Grove, City of
- Gladstone, City of
- Gresham, City of
- Hillsboro, City of
- Lake Oswego, City of
- Milwaukie, City of
- Newberg, City of
- Oak Lodge Water District
- Portland, City of
- Raleigh Water District
- Rockwood Water PUD
- Sandy, City of
- Scappoose, City of
- Sherwood, City of
- South Fork Water Board
- Sunrise Water Authority
- Tigard, City of
- Troutdale, City of
- Tualatin, City of
- Tualatin Valley Water District
- West Slope Water District
- Wilsonville, City of



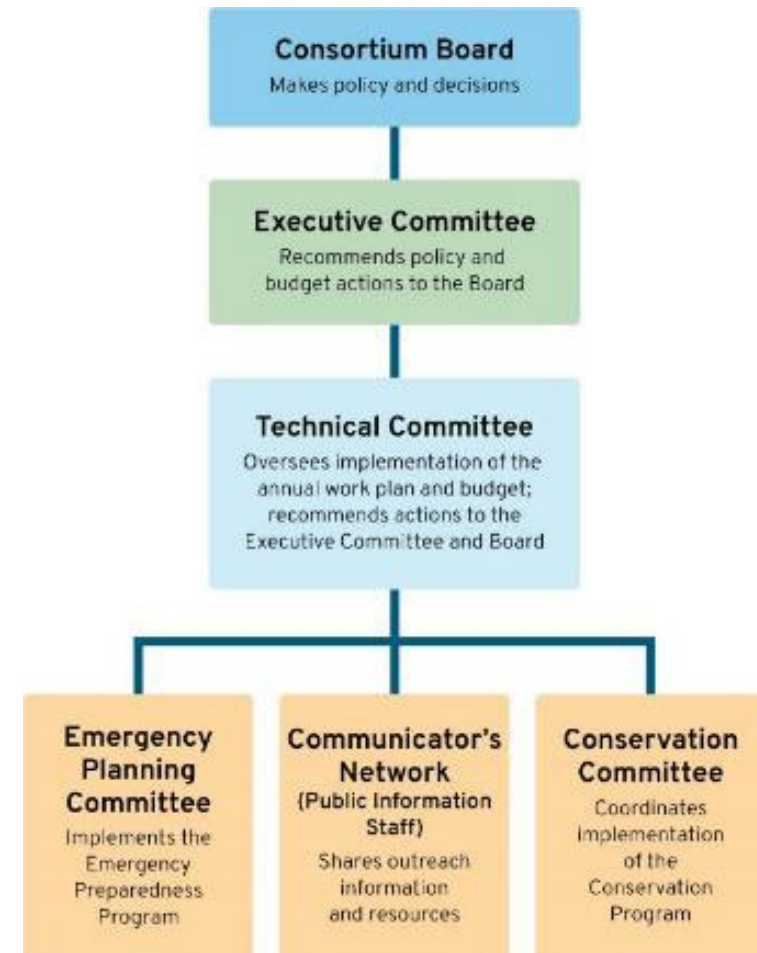
# How we operate

## Focus Areas:

- Meeting long-term water needs including water conservation
- Emergency Preparedness and Resiliency
- Regional Partnerships

**Budget:** \$1.2 million/year paid by member dues

**Staff:** 3.5 FTE

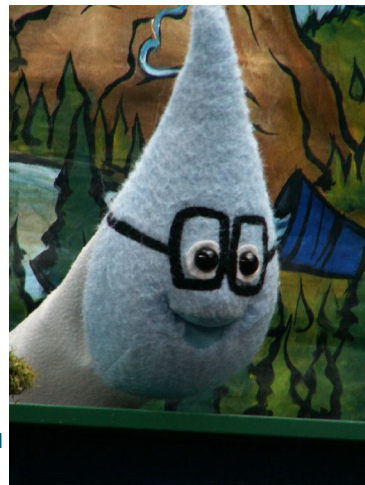
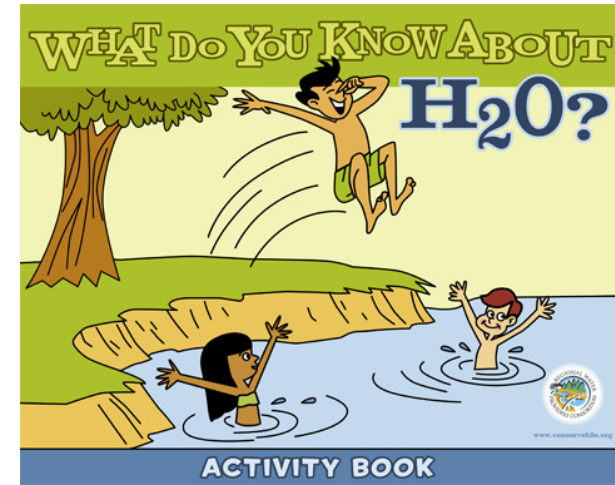
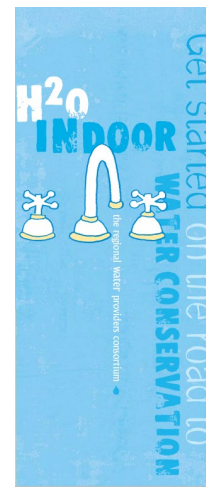
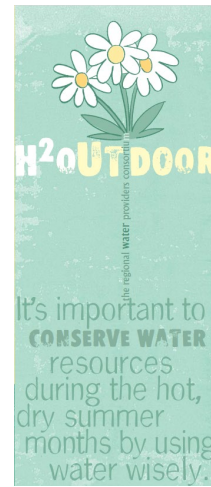
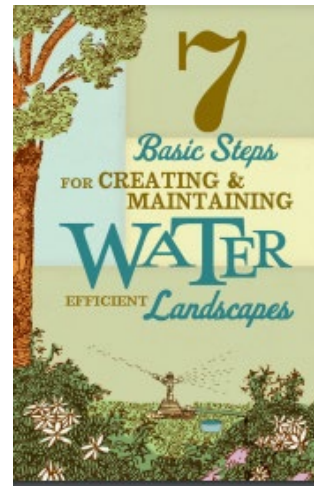
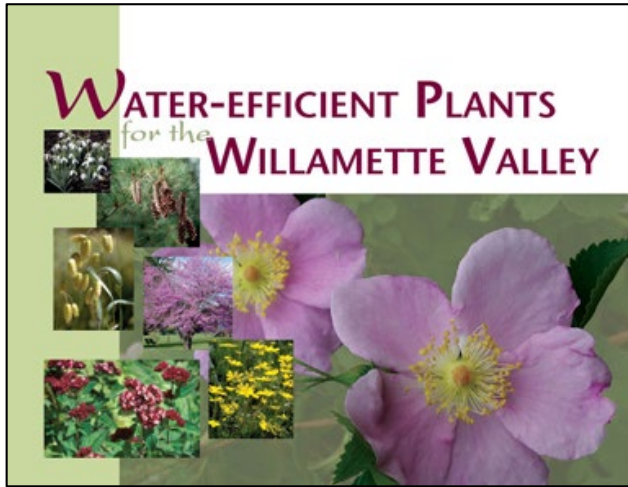


# The first ten years (1997-2006)

- Plans, Studies, Programs
- Member vs Consortium Roles
- All hands on deck! Resource Development
- .5 → 1 FTE

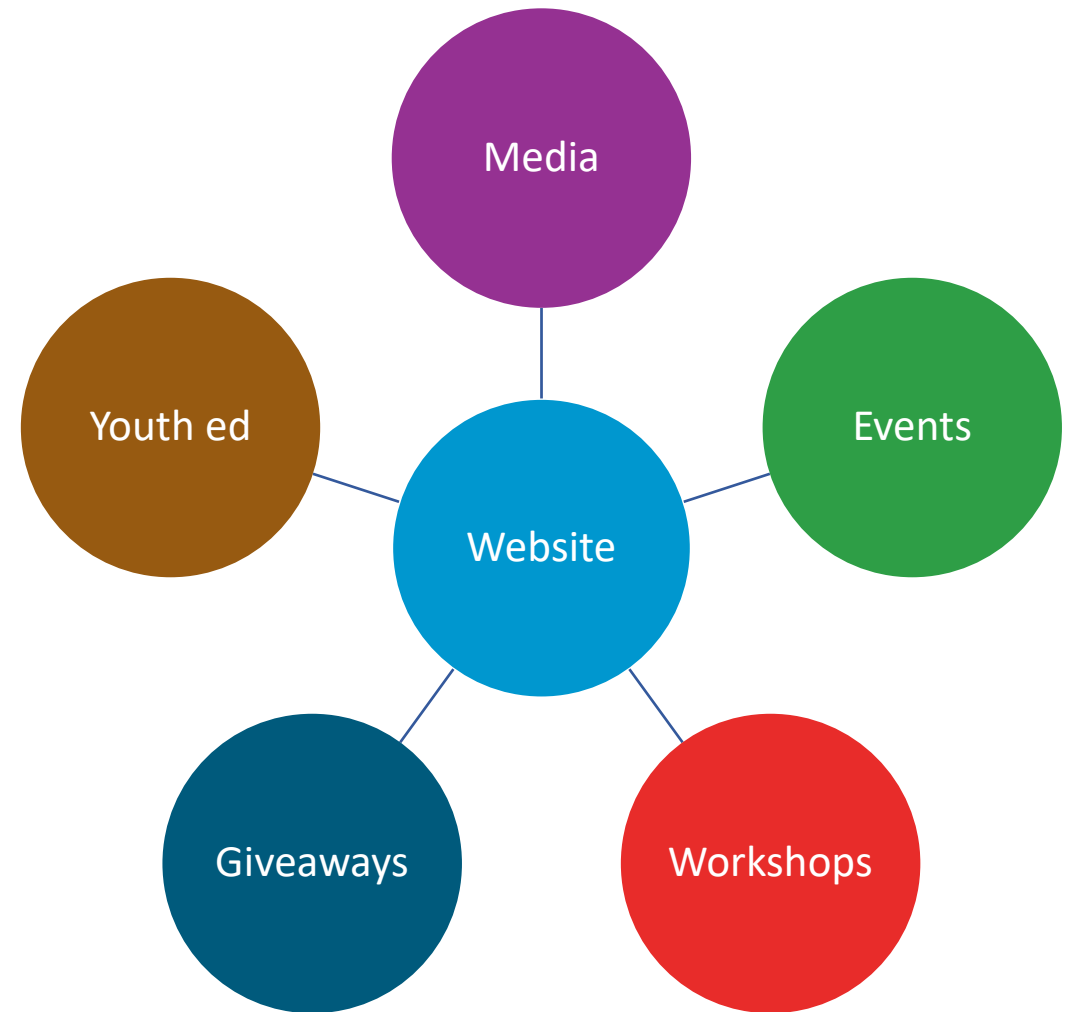


# What did we do?



# The next ten years (2007-2016)

- 2 FTE
- Public outreach managed in-house
- More, more, and more!
- Member vs Consortium Roles



# A snapshot



**WASHING MACHINE BASKETBALL**

THURSDAY, AUGUST 21, 2008

The Oregonian  
**HG NW**  
HOMES & GARDENS  
OF THE NORTHWEST



LIGHT DRINKERS MAKE A SPLASH IN A CONSERVATION EXPERT'S GARDEN/14

**GROW DRY**

• NW DESIGN: : Sleeping porch wakes up/7  
• LANDSCAPES: A place to nest/10 • EARTH WISE: Juniper for lumber/21




**WATER.**  
WE ALL DEPEND ON IT.  
[conserveh2o.org/water](http://conserveh2o.org/water)



**ARE YOUR SPRINKLERS OUT OF CONTROL?**  
[conserveh2o.org/water](http://conserveh2o.org/water)

**FLOW DOWN. GO EASY ON THE H2O.**  
[conserveh2o.org/water](http://conserveh2o.org/water)



**IS YOUR EMERGENCY KIT A DISASTER?**  
**INCLUDE WATER** IN YOUR EMERGENCY KIT  
1 GALLON PER PERSON PER DAY — for 14 days



[www.regionalh2o.org](http://www.regionalh2o.org)



**Get Your Kit Together!**  
**INCLUDE WATER** IN YOUR EMERGENCY KIT  
1 GALLON PER PERSON PER DAY — for 14 days



[www.regionalh2o.org](http://www.regionalh2o.org)



**Get Your Kit Together!**  
**INCLUDE WATER** IN YOUR EMERGENCY KIT  
1 GALLON PER PERSON PER DAY — for 14 days



[www.regionalh2o.org](http://www.regionalh2o.org)

# The last five years

- Same FTE
- Same media budget as 20+ years ago
- More, more, more!
- Recycle, purpose, reuse
- Member vs Consortium Roles





# how to store, treat & access water for emergencies

Legionella

PublicAlerts.org

public  
health

hand  
watering

Chlorine  
shortage

smart  
irrigation  
controllers

your

infrastructure

leak  
detection &  
repair

Consumer  
Confidence  
Reports

water is

WaterSense  
devices &  
fixtures

printed  
materials

safe

water  
quality

drinking  
water  
sources

resources

wildfires

Tips for

conserving water  
preparing for emergencies  
protecting local water sources

how to videos

rebates



# Equity and Accessibility

- Accessible communications
- Collaborating with regional partners
- Embedding equity into our day-to-day work



**利用热水器取水!**

**如何在紧急情况下从热水器取水**

在紧急情况下，例如严重的冬季风暴或地震，您的供水服务可能暂时无法使用。

如果发生这种情况，您的热水器可以为您提供 30-80 加仑的水，用于饮用、烹饪和卫生。（无槽加热器不提供此选项。）

**从热水器取水之前：**

- 找到您的热水器：通常，热水器位于独立式住宅的地下室或车库中，以及公寓和预制房屋的壁橱中。
- 关掉您家的供水：采取这一步骤，特别是在大地震之后，可以帮助确保水留在水箱中，并且水质不会受到影响或安全使用。紧急水截流阀通常位于多数房屋的地下室、屋顶或地板下方的狭小空隙或车库中，或者住宅地基外围。使用此阀门关闭家中的供水。

**从热水器取水的说明：**

❶ 关闭热水器的电源。这一步对确保您的安全至关重要。您可能需要将手电筒、护目镜、手套和螺丝刀备放在易于取用的位置。

**电热水器：**通过电源总开关箱面板上的正确开关来关闭热水器的电源。（建议花点时间事先正确识别正确的开关。）

**天然气热水器：**找到热水器上的开关，然后将按钮旋到点火启动阀 - 请注意不要转到底。

查看最新执行步骤 →



# Public outreach by the numbers



# Drinking water

## BY THE NUMBERS

A snapshot of what it takes to bring drinking water from its source to your home or business in the Portland, OR metropolitan region.

The Regional Water Providers Consortium provides leadership in the planning, management, stewardship, and resiliency of drinking water in the Portland, OR metropolitan region.

Get more information and resources at [www.regionalh2o.org](http://www.regionalh2o.org).



# 24

water providers

SERVICE AREA COVERAGE FROM

2 square miles TO 143 square miles



# 1,100

staff 

year the oldest section of water system in the region was constructed

# 1881



# 5

 primary water sources

# 171

pump stations



# 202

 reservoirs and tanks

SMALLEST 10 thousand gallons  
LARGEST 50 million gallons



# 7,000

 miles of pipe

SMALLEST DIAMETER 3/4 of an inch  
LARGEST DIAMETER 7.5 feet



# 874

 million gallons storage capacity

# 46,767

 fire hydrants

# 444,467

homes and businesses served



Content represents information from most public drinking water systems in Clackamas, Multnomah, and Washington Counties. It is not intended to be a comprehensive set of data; graphic comparisons are not to scale. The Regional Water Providers Consortium is not liable for the misuse of this information.



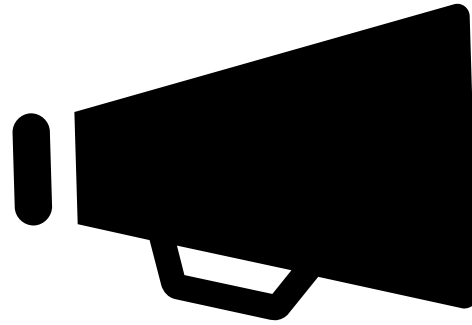
# Things that stand the test of time

- Build trust among water providers and partners
- Peer-to-peer learning
- Sharing of resources and expertise
- Mutual support AND Autonomy
- Speak with unified voice
- Save money and reduce risk by pooling resources and working together around common goals
- Access to grants



# Next five years

- Same FTE?
- More, more, more!...?
- Community engagement: goals and roles
- Member vs Consortium roles



Radio  
Digital  
Television  
Print  
TriMet





[regionalH2O.org](https://regionalH2O.org)



[RegionalH2O](https://www.facebook.com/RegionalH2O)



[ConserveH2Org](https://twitter.com/ConserveH2Org)



[RegionalH2O](https://www.youtube.com/RegionalH2O)