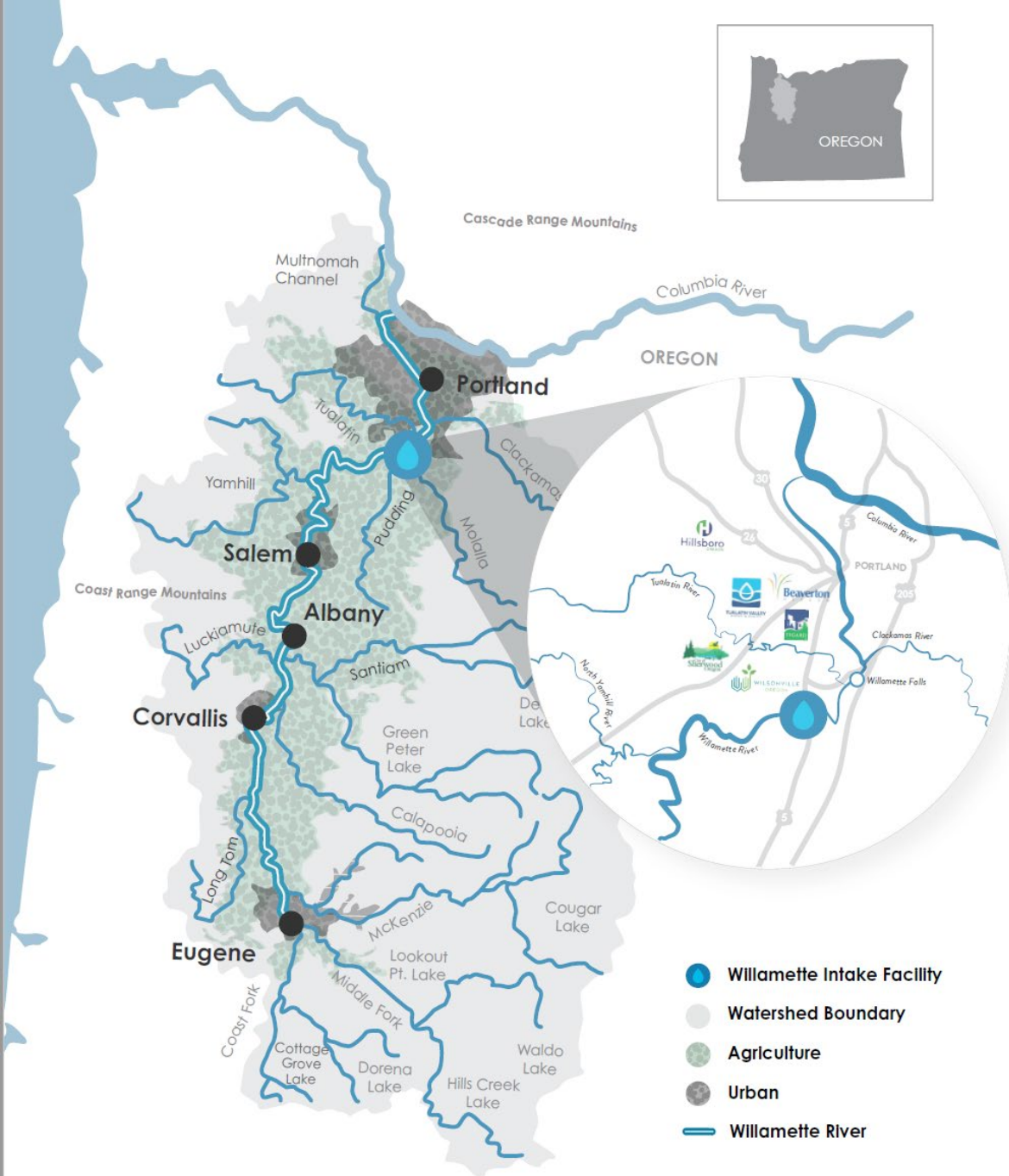


DEVELOPING A STRATEGIC SOURCE WATER PROTECTION PLAN FOR OREGON'S LARGEST WATERSHED

May 5, 2023 | PNWS - AWWA
Kennewick, WA



Willamette River Watershed



- The Willamette River is the heart of our area, supplying water to support people, agriculture, industry, native plants, fish, and wildlife habitat
- Willamette River basin consists of 13 tributaries that feed into the main stem of the river
- It defines our region and communities we call home and is a natural treasure of Oregon

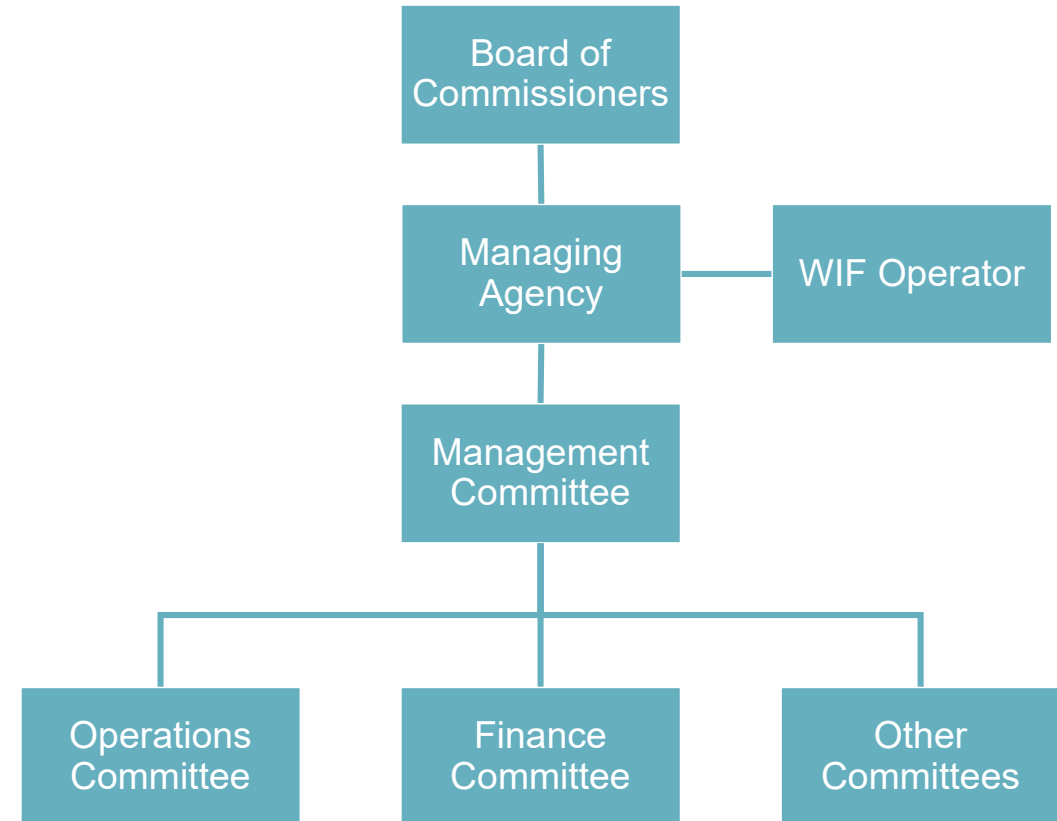
Willamette Intake Facilities (WIF) Commission

- **Mission:** To responsibly secure a safe and reliable Willamette River drinking water supply for our communities
 - Oversee management and operation of the intake facilities (e.g., fish screens, caisson, pump building)
 - Strong model for shared ownership of critical water supply asset that are vital to the region's drinking water supply
 - Work effectively to address a multitude of impacts associated with water rights, watershed protection, stakeholder collaboration, and intake facilities operations



WIF Commission Structure

- Partnership of the Tualatin Valley Water District and cities of Wilsonville, Sherwood, Hillsboro, Tigard and Beaverton
- Committees required by IGA
- Managing Agency is TVWD on behalf of the WIF Partners
- Mission, Vision, Values, Goals (MVVG) Working Group from Operations Committee and Managing Agency





Protecting the health of the Willamette River is essential
for the well-being of the region

The Core Ingredients



MISSION

Why the WIF Commission exists – its purpose, goal, or critical function, especially as it relates to watershed protection and water rights



VISION

An aspirational view of what the WIF Commission wants to be in the future



VALUES

The WIF Commission's foundational character – how it conducts business and how it is perceived

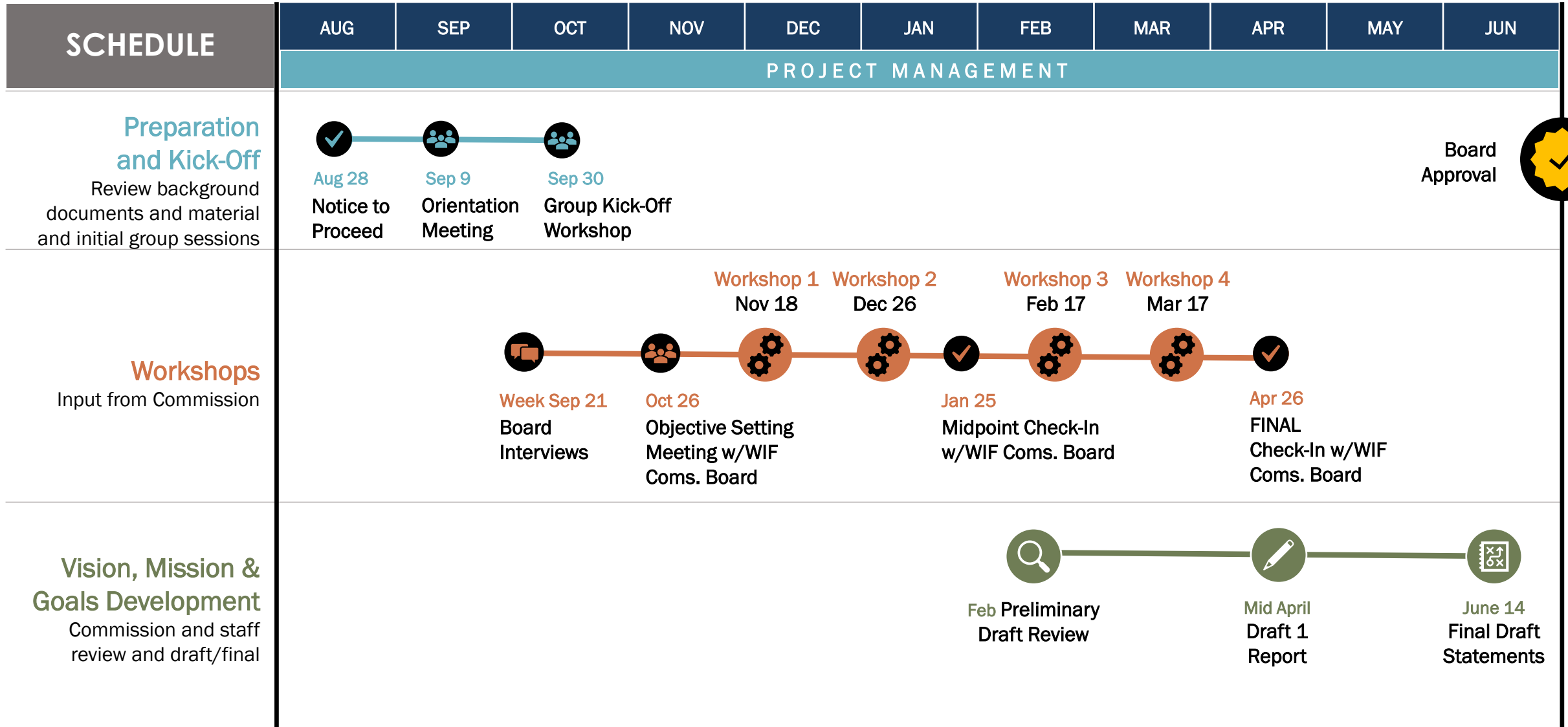


GOALS

The WIF Commission's prioritized areas of focus that will drive strategies and actions to achieve the overall MVVG

Project Schedule

2021



Desired Outcomes

- Build strong partnership and collaboration
- Construct WIF on schedule, on budget
- Responsible, reliable facility operations
- Leverage influence to protect watershed
- Adapt to uncertainties in the future



Board Input

Desired Outcomes for Process

Unified voice

**Guidelines for
priority setting
and decision
making**

**Defined
success**

**Mechanisms to
communicate
purpose w/ the
public**

Board Input on Areas of Focus

General questions, but to what degree?

Water quality and watershed protection

Curtailment planning and future supply needs

Construction and operation of assets

Education

Disaster/emergency preparedness

Long-term planning >30 years out

DEI

Mission and Vision Themes

The WIF Commission is recognized as...

Strong Partners

- Results-focused collaboration
- Long-term aligned vision and plans
- Shared Purpose
- Partnering for Watershed

Watershed Protectors

- Supporting source water protection
- Protecting habitat and environment
- Resiliency to disasters

Regional Influencers

- Advocating for legislation
- Providing Watershed Education
- Securing funding and support

Mission

To responsibly secure a safe and reliable Willamette River drinking water supply for our communities.



Vision

To become a trusted steward of the Willamette River watershed.

- ✓ We apply science, innovation and advocacy for resilient and clean water stewardship.
- ✓ We improve awareness, provide education and build support for watershed protection.
- ✓ We advocate at all levels for investment and policy to protect drinking water source quality.



Values

To conduct business in a manner that is unified, responsible and reliable.



Unified

We are devoted to creating cooperative and inclusive decision-making environments where WIF Commission partners input is respected.



Responsible

We are dedicated to cost-effective and responsible water management.



Reliable

We are committed to data-driven and science-based decision making.

The Three Pillars

The strategic pillars hold up the Mission and Vision and give focus to the goals.



Water Quality Protection

We engage in addressing **existing, emerging and potential risks** that may impact water quality at the intake facility ahead of treatment.



Water Supply Stewardship

We pursue **access to reliable water supply** to meet the needs of the region and participating agencies.



Effective WIF Operations

We are dedicated to effective utility management to **deliver consistent operations and quality service** to our communities.



Water Quality Protection

We engage in addressing existing, emerging and potential risks that may impact water quality at the intake facility ahead of treatment.



Goals

- 1 Develop and maintain a **state and regionally supported source water protection plan**.
- 2 **Acquire grants, loans, and funding** in support of source water protection plan implementation.
- 3 **Promote information exchange amongst stakeholders**, tracking relevant data on emerging issues such as contaminants, natural hazards, and regulatory changes.
- 4 **Lead outreach and education** on the Willamette River Basin history and current and future needs for protection.
- 5 Give members of the WIF Commission resources to enable them to **serve as water quality experts and representatives** of WIF Commission interests.
- 6 Invest in **monitoring technology and communication networks** with upstream and downstream agencies and private partners to detect and provide early incident notifications.



Water Supply Stewardship

We pursue **access to reliable water supply** to meet the needs of the region and participating agencies.



Goals

- 1 Engage proactively with regulatory agencies** on water supply needs and future demands.
- 2 Foster relationships with the State and Federal agencies** to proactively address water supply shortage scenarios and develop cooperative agreements.
- 3 Periodically collect water demand forecasting information** from partner agencies to support operational planning and decision making.
- 4 Engage proactively with dissenting or potentially opposing stakeholders.**
- 5 Develop curtailment plans that enhance preparedness** for water scarcity scenarios and are adopted by the Board.



Effective WIF Operations

We are dedicated to effective utility management to **deliver consistent operations and quality service** to our communities.



Goals

- 1 Develop and maintain **Operations, Curtailment, and Emergency Response Plans** and guide shared ownership with priority stakeholders.
- 2 Ease **decision making on prioritized investments** using strategic asset management and Capital Improvement Program best practices.
- 3 Preserve a **cooperative team dynamic** among WIF members through regular knowledge exchange workshops and retreats.

WIF Commission Strategic Framework



Available at: WIF@TVWD.org

Or scan below:



Lessons Learned

- Build project development timeline up front to include various levels of engagement – elected, management, and operational folks
- Importance of first talking with elected officials – determine common themes and areas of focus
- Focus on leveraging resources to accomplish shared goals
- Get to know your partners – anticipate their individual goals and acknowledge differences in opinions
- Strategize ways to build group consensus



Next Steps

Final development of the WIF Commission's Watershed Protection, Monitoring, and Outreach (Source Water) Plan

Major plan components include:

- Watershed characteristics
- Risk analysis
- Funding opportunities matrix
- Stakeholder engagement
- Case studies and monitoring technology



Questions?

Special acknowledgement and thanks to Water Systems Consulting, Inc. for all graphics associated with the WIF Strategic Framework and this presentation!



Christina Walter
WWSP Permitting & Outreach Manager
Christina.walter@tvwd.org
(503) 840-3830

Joelle Bennett, PE
WWSP Assistant Director
Joelle.bennett@tvwd.org
(503) 941-4577

Joel Cary
Water Resources Division Manager
Joel.cary@tvwd.org
(503) 848-3019

Thank you!

