

# Curtail Your Enthusiasm

## A Tabletop Exercise



REGIONAL WATER PROVIDERS CONSORTIUM



# Members and Regional Water Sources



## 25 WATER PROVIDER MEMBERS

- Beaverton, City of
- Clackamas River Water
- Cornelius, City of
- Forest Grove, City of
- Gladstone, City of
- Gresham, City of
- Hillsboro, City of
- Lake Oswego, City of
- Milwaukie, City of
- Newberg, City of
- Oak Lodge Water District
- Portland, City of
- Raleigh Water District
- Rockwood Water PUD
- Sandy, City of
- Scappoose, City of
- Sherwood, City of
- South Fork Water Board
- Sunrise Water Authority
- Tigard, City of
- Troutdale, City of
- Tualatin, City of
- Tualatin Valley Water District
- West Slope Water District
- Wilsonville, City of



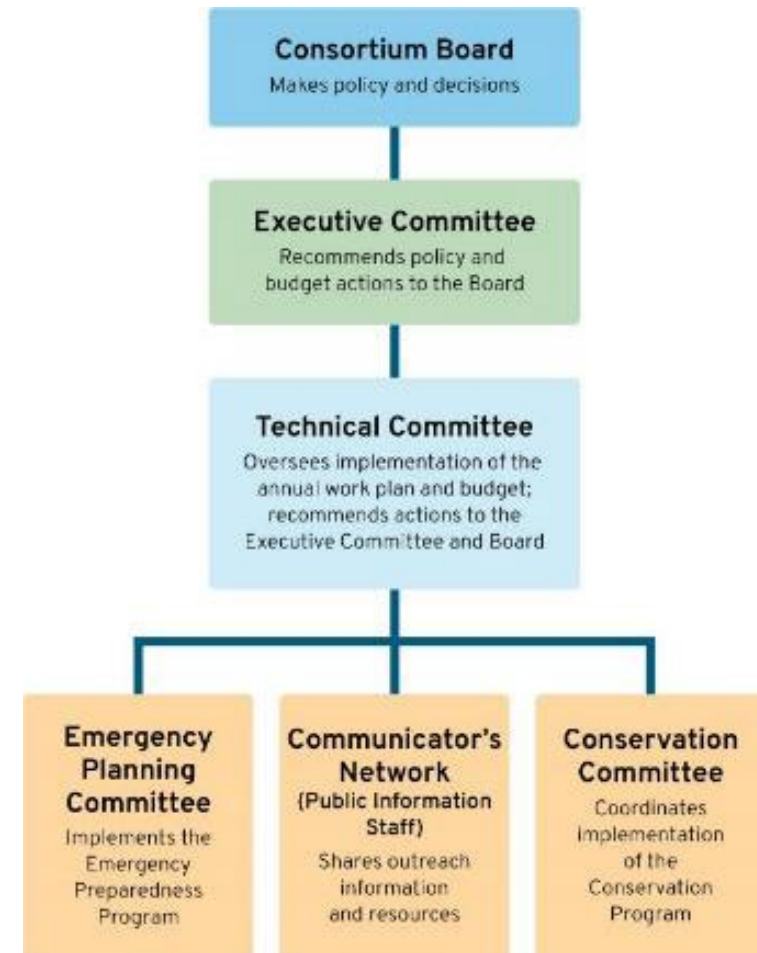
# How we operate

## Focus Areas:

- Meeting long-term water needs including water conservation
- Emergency Preparedness and Resiliency
- Regional Partnerships

**Budget:** \$1.2 million/year paid by member dues

**Staff:** 3.5 FTE



# Curtail Your Enthusiasm Exercise

- Coordinated by regional planning committee
- 74 participants
- Accessible and coordinated communications in response to a set of curtailment scenarios
- Online half-day event

**Curtail Your  
Enthusiasm**



# Exercise Objectives

- Participants gain a broader understanding of drinking water curtailment including causes, impacts, and the different stages of curtailment and triggers among water providers.
- Participants learn the importance of coordinated messaging and effective ways to share timely information with each other during the life cycle of a curtailment event



# Exercise Objectives Continued

- Participants identify gaps for providing accessible and translated messaging to the public.
- Participants identify regional communication tools and roles when there is a curtailment event.



# Exercise Agenda

8:30	<i>Welcome and Introductions</i>
8:40 – 8:50	Curtailment Plan Refresher
8:50 – 9:05	ADA and Title VI Overview
9:05 – 9:15	Zoom and Exercise Overview
9:15 – 10:05	Phase 1
10:05 – 10:15	Report Out: Phase 1
10:15 – 10:25	BREAK
10:25 – 11:15	Phase 2
11:15 – 11:25	Report Out: Phase 2
11:25 – 11:30	BREAK
11:30 – 11:55	Phase 3
11:55 – 12:00	Report Out: Phase 3
12:00 – 12:30	Hotwash
12:30	End of Exercise

# Lessons Learned and next steps

- Interactive events work better in person
- More translated content and tools are needed
- Accessible communications is now more of a priority
- Closer look at curtailment triggers and water availability assumptions needed?
- Consortium vs member roles





# Mini exercise – 10 minutes

- Mid-July
- Early drawdown or stream levels low
- Water demand is high
- Multiple counties already declared drought
- It is likely your entity will go into curtailment
- What communication plans and resources do you have ready to go?
- What will you need to do to make these accessible to all customers?
- Who will you need to rely on to be successful?





[regionalH2O.org](https://regionalH2O.org)



[RegionalH2O](https://www.facebook.com/RegionalH2O)



[ConserveH2Org](https://twitter.com/ConserveH2Org)



[RegionalH2O](https://www.youtube.com/RegionalH2O)