

Bull Run
TREATMENT
PROJECTS

*Our water: Safe and abundant
for generations to come*

PORTLAND WATER BUREAU

Bull Run Treatment Projects

Integrating Social Equity

April 29, 2022



PNWS-AWWA
Water 2022
Tacoma, WA • April 27-29



The new Filtration Facility is located in a rural area on a property already owned by the Water Bureau.





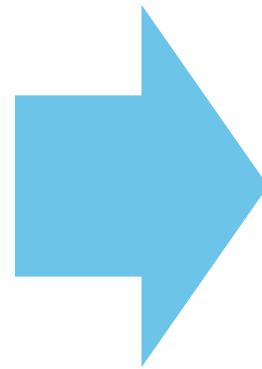
equity

diversity

inclusion

2021–2025 Portland Water Bureau

Plan to Advance Equity,
Diversity, and Inclusion



What does equity look
like on a project when
there are not direct
impacts to a vulnerable
community?

Equity has been applied to all areas of the project



**For our
health**

- Reducing health risks
- Improving community resilience



**For our
economy**

- Capacity building programs for small businesses
- Labor workforce agreements



**For our
future**

- Connecting with Tribal nations and Indigenous communities
- Accessibility to diverse current and future workforce



For our health

Advancing equity through
reducing risks to vulnerable
populations



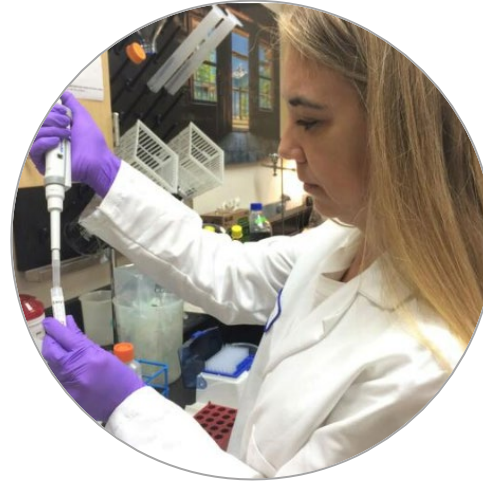
**For our
health**

Health and resilience benefits disproportionately benefit the vulnerable



Reducing levels of
lead at the tap

Black children are almost three times as likely as white children to have elevated blood lead levels



Reducing risks from
Cryptosporidium

Low-income customers are much more vulnerable to illness because of reduced access to leave, medical care and other resources



Increasing resilience to
fires and other
disasters

Disasters like Hurricane Katrina have illustrated that vulnerable populations lack the resources to prepare for and respond to disasters



**For our
health**

Low-income focus groups revealed big differences in perceptions and concerns

Low-income customers were:

- Less satisfied with the quality of their water
- More likely to have experienced water quality issues in their home
- More likely to be taking actions to address perceived water quality risks, including boiling their water and using an alternate source (even drinking soda to avoid drinking tap water!)
- More concerned about *Cryptosporidium* and lead





**For our
health**

Providing a high level of service benefits everyone

- When you are thinking about equity don't forget about our core missions of providing safe, reliable drinking water
- When our infrastructure fails, the costs are always disproportionately borne by the vulnerable
- Investing in our systems advances equity, as long as we have programs in place to help those who cannot afford to pay



For our economy

Advancing equity by creating economic opportunity for historically underrepresented groups



**For our
economy**

The Water Bureau has gone well beyond “check the box” requirements

Professional service firms

20%

Participation goal
for contracts for
equity contractors



- ✓ **Performance management** program to support success on the current project
- ✓ **Capacity building** program focused on long-term success

Investing in firms today means firms have a greater capacity to deliver more great work on future projects!



**For our
economy**

Participation in the Filtration Projects
has been impactful to many firms



Kimimela Consulting

Support to form a
new firm and first
project!



**Convergence
Architecture**

Earned value project
management
Workload planning



**Minority Construction
Group**

New service area
Training of key staff



**For our
economy**

Construction contracts will be delivered
under a new Regional Workforce
Agreement

Subcontracting
Requirements



Workforce Participation for
Women and Minorities



Focus on apprentice and
journey-level workers to
promote long-term career
success in the trades

*These programs will have a lasting impact on the
construction industry in the Portland area*



**For our
future**

Advancing equity by reducing
barriers to participation



**For our
future**

Engaging with tribal nations and our local Indigenous communities



Engaging with
eight tribal
nations
government-to-
government



Urban Indigenous
Engagement
Circle focused on
creating guidance
for the Water
Bureau



Partnering with
the Indigenous
community on an
evaluation of
ITECK
opportunities



**For our
future**

Indigenous Traditional Ecological and Cultural Knowledge (ITECK)

- Process led by Serina Fasthorse of Kimimela Consulting
- Facilitating a collaborative process with Native community members
- Goal is to identify opportunities to integrate ITECK at the filtration site
- Focus is on building relationships, reciprocal learning and addressing institutional barriers

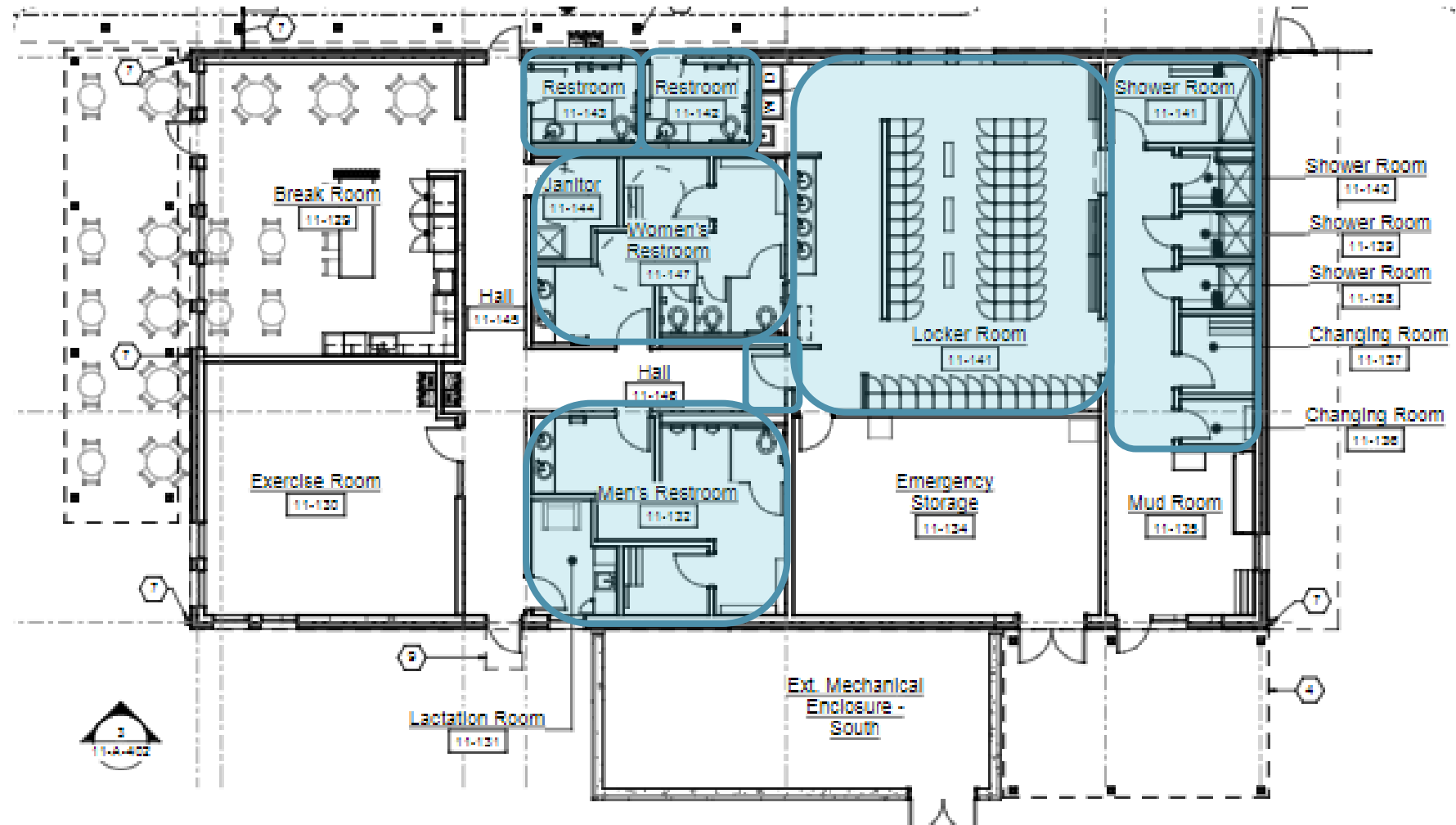




**For our
future**

Making room for the workforce of the future: Locker Rooms

- Goal: design a functional space for current known staff and future unknown staff that is comfortable for all
- Talked with current staff, other water treatment plants, Bureau leadership, architects

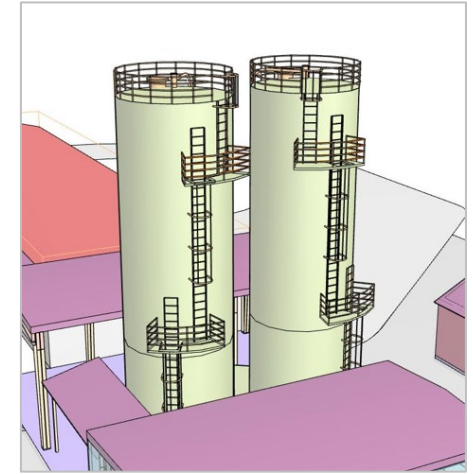
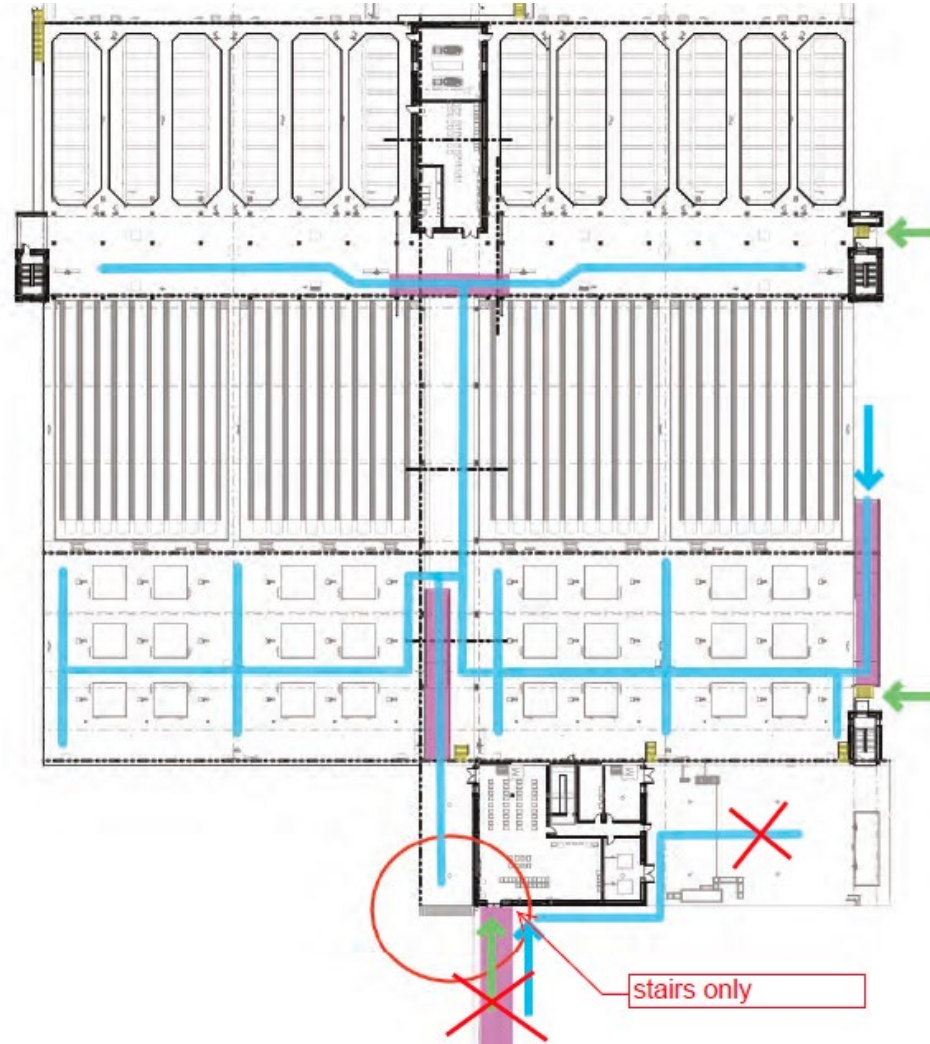




**For our
future**

Making room for the workforce of the future: Safety improves Accessibility

- Goal: design for safety and look for cost-effective opportunities to benefit different mobilities ("curb-cut effect" in reverse)
- Design elements:
 - Functional ramps for carts, push carts, and wheelchairs
 - Stairs and catwalks instead of ladders to access tanks



We can find opportunities to advance equity by taking an expanded view of our role in our communities



Protecting the health of
our most vulnerable
community members



Providing jobs and
business
opportunities



Reconnecting communities
with government
in a positive way!



Bull Run
TREATMENT
PROJECTS

*Our water: Safe and abundant
for generations to come*

Learn More portland.gov/bullrunprojects

Thank you!