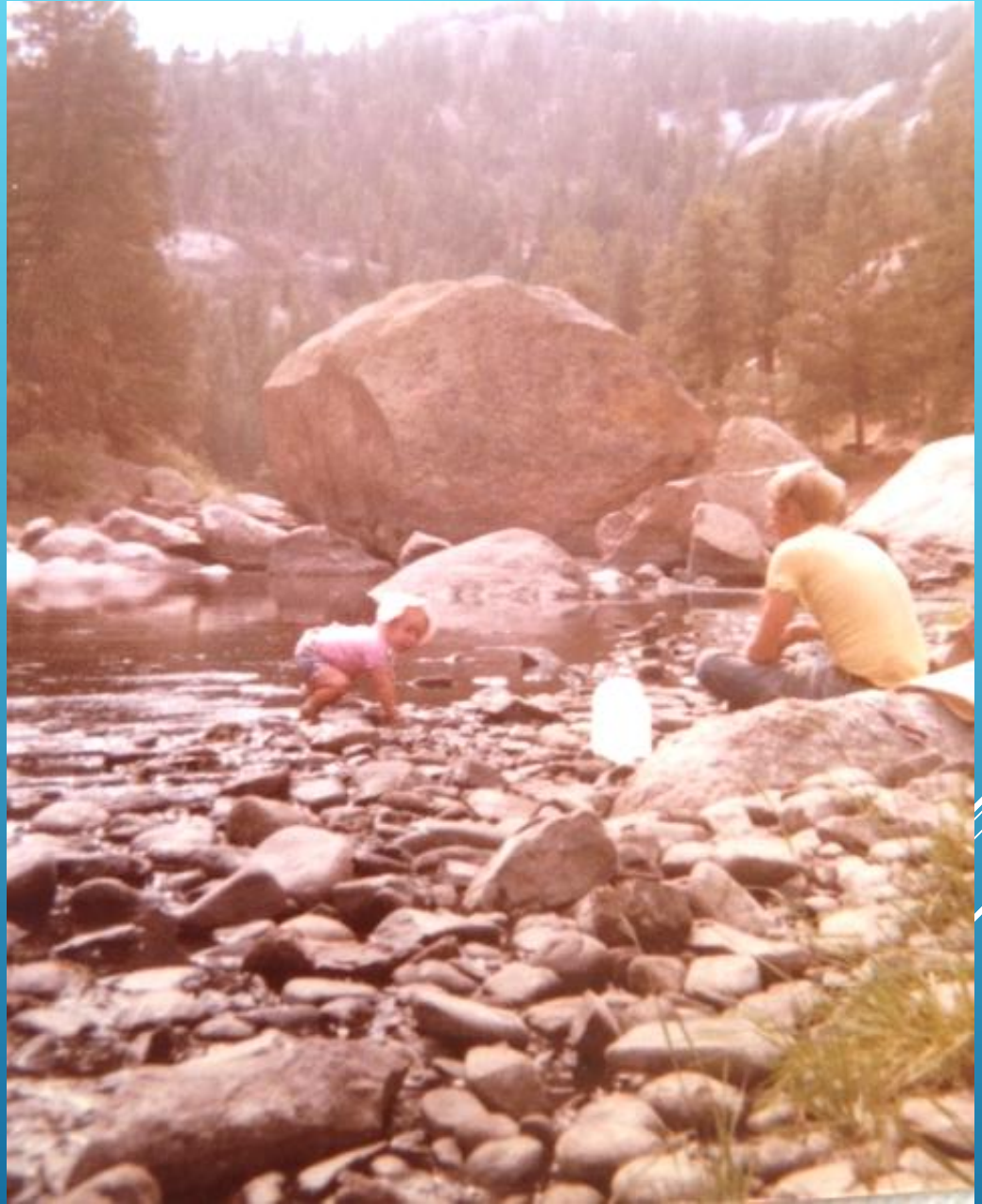




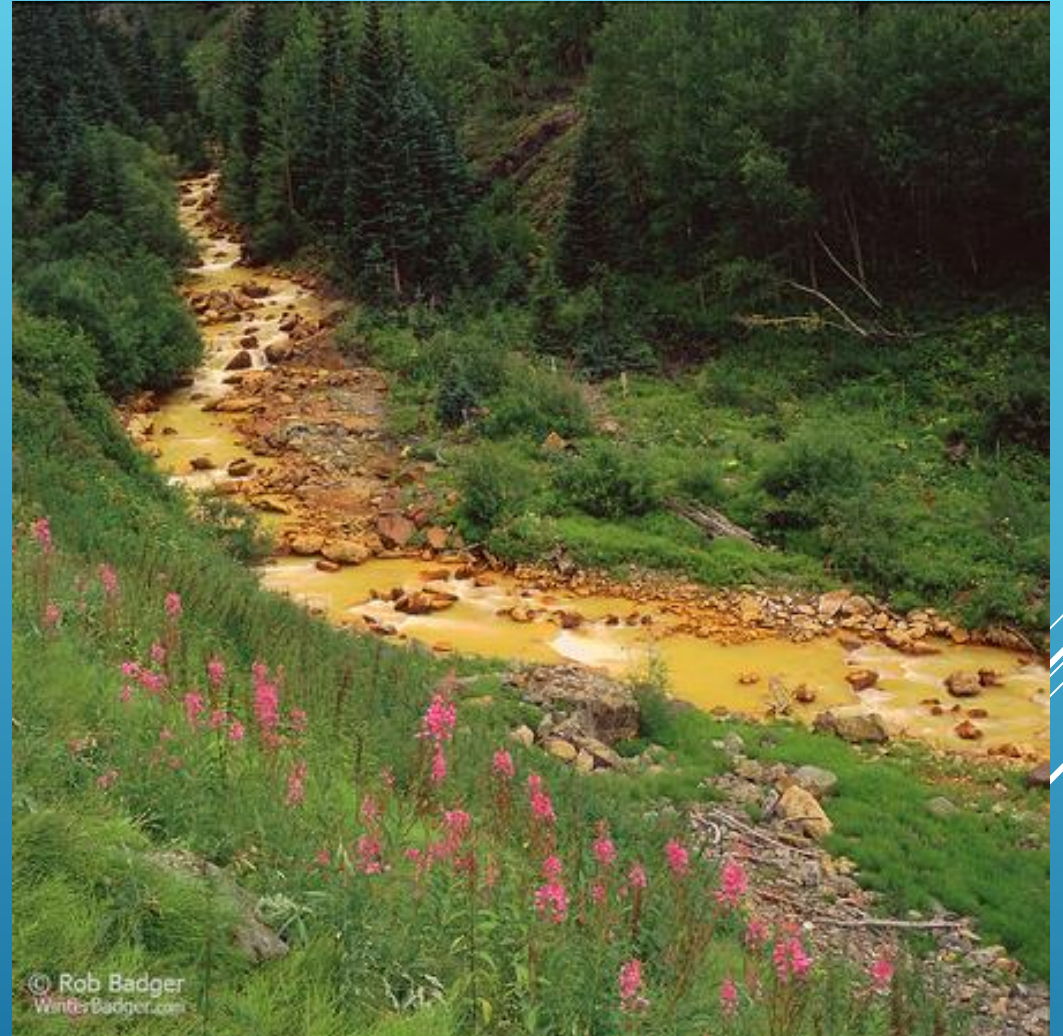


LOVE





PASSION





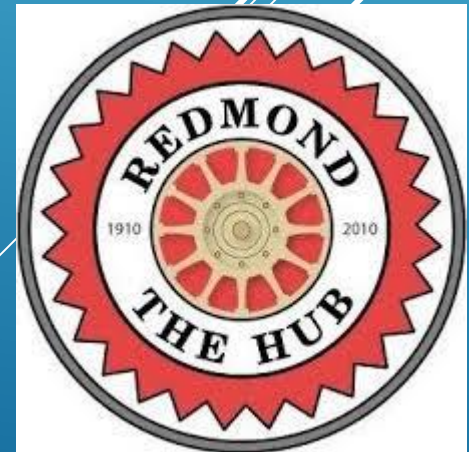
DIRECTION



EVERYONE NEEDS A TEACHER AND AN INSPIRATION



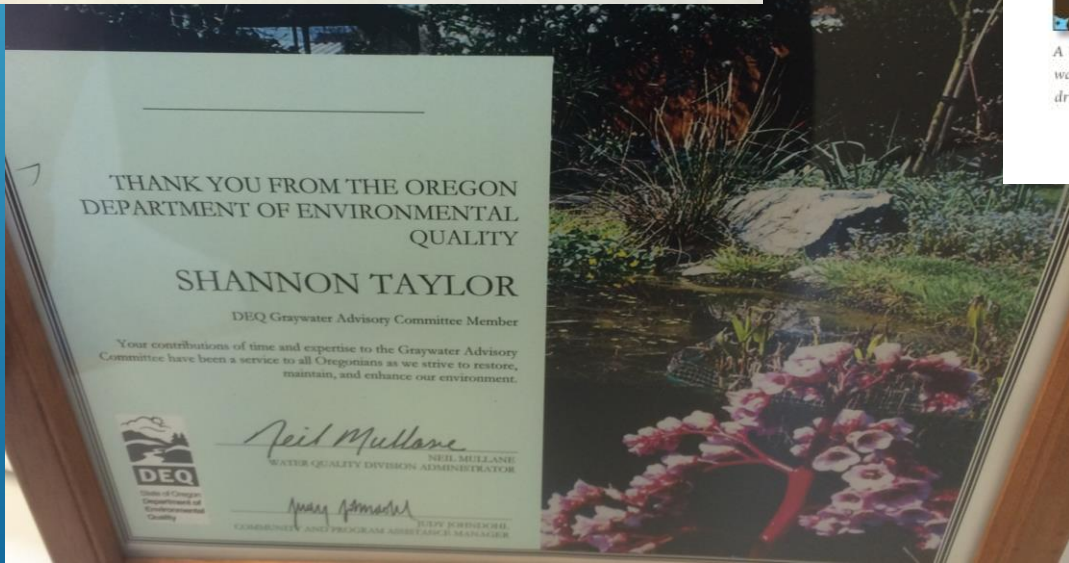
TRAINING





WHERE ARE MY PEOPLE?

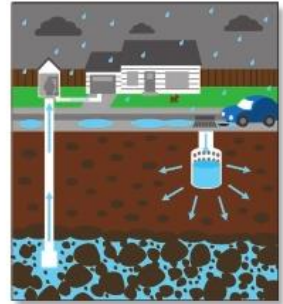




### What Goes on the Ground Goes in the Water

As stormwater runs over hard surfaces, it picks up oil, chemicals, bacteria and other pollutants. If runoff soaks into the ground, some pollutants are filtered out in the soil but it may not be enough to ensure clean groundwater and safe drinking water. Polluted groundwater is very expensive or impossible to clean.

Stormwater runoff flows to a local stream, swale, or into an Underground Injection Control (UIC) system such as a drywell or drill hole. In a drywell, a large "empty" well, water soaks into the soil and some pollutants are filtered out before it enters the groundwater.



A UIC releases stormwater underground; water wells pull groundwater for drinking and other uses.

### Regulatory Information

UIC systems are regulated by Oregon Department of Environmental Quality (DEQ) and Environmental Protection Agency. For more information, contact:

- ➔ Oregon DEQ: 503/229-5630
- Statewide Toll-Free: 1/800-452-4011
- <http://www.deq.state.or.us/wq/uic/uic.htm>
- For questions, or to report illicit dumping, please contact:

### Clean Water Tips at HOME

Did you know that approximately 70% of Oregon's residents rely at least partly on drinking water that is pumped from groundwater?



Here's what you can do at home to protect groundwater from pollution.



You can prevent pollutants from entering the water cycle!

The water you protect may be your own!

ACWA 11/13



FIND YOUR NETWORK...SAY "YES"

Pacific Northwest Clean Water Association  
**PNCWA**

Newsletter  
Winter 2013-14



FEATURE FOCUS:  
CLIMATE READY  
WATER UTILITIES  
starts on page 26

WET WEATHER  
ISSUES  
Page 36

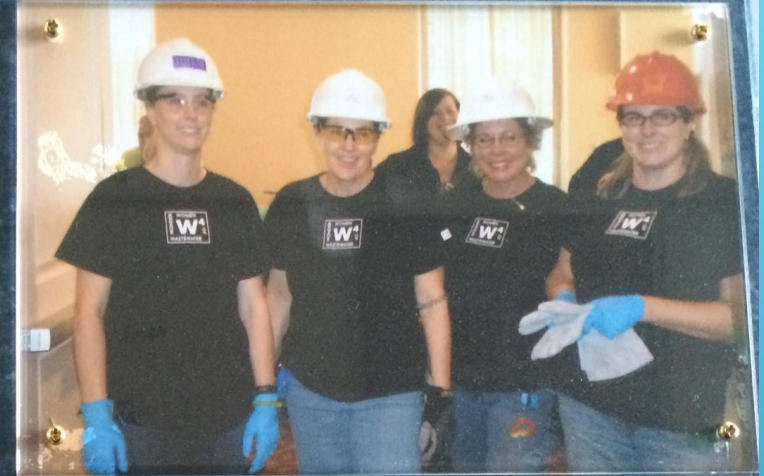
PNCWA2014 CALL  
FOR ABSTRACTS  
Page 11



2011  
PNCWA  
Operations  
Challenge

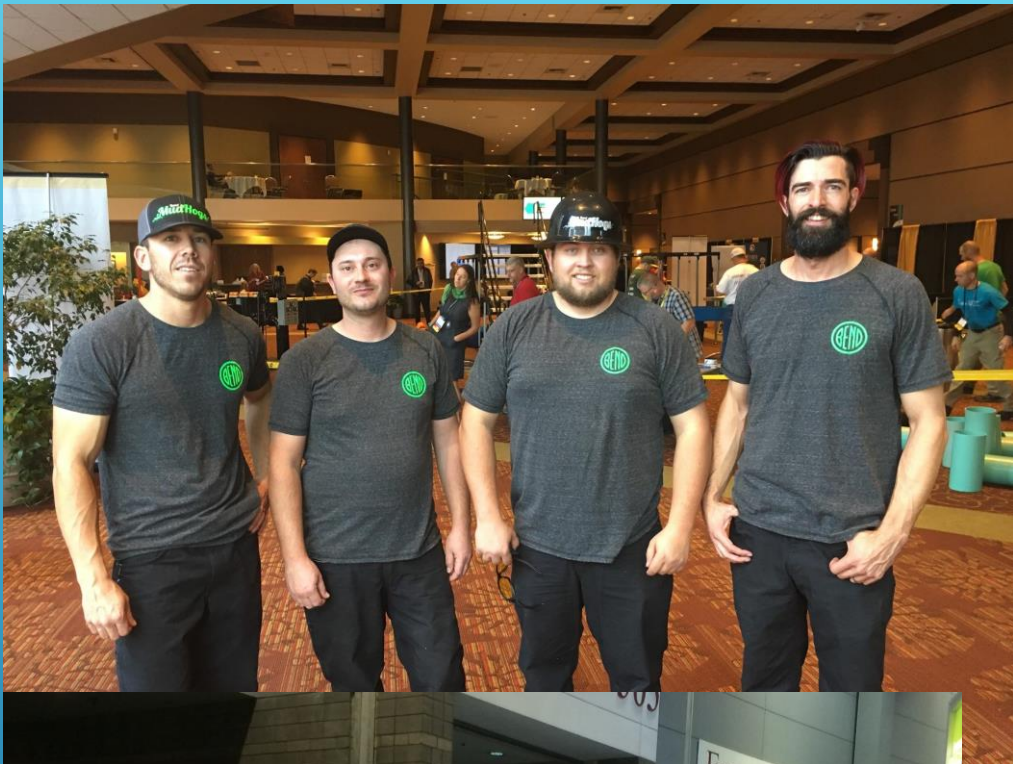
Vancouver, Washington

**COMPETITOR**

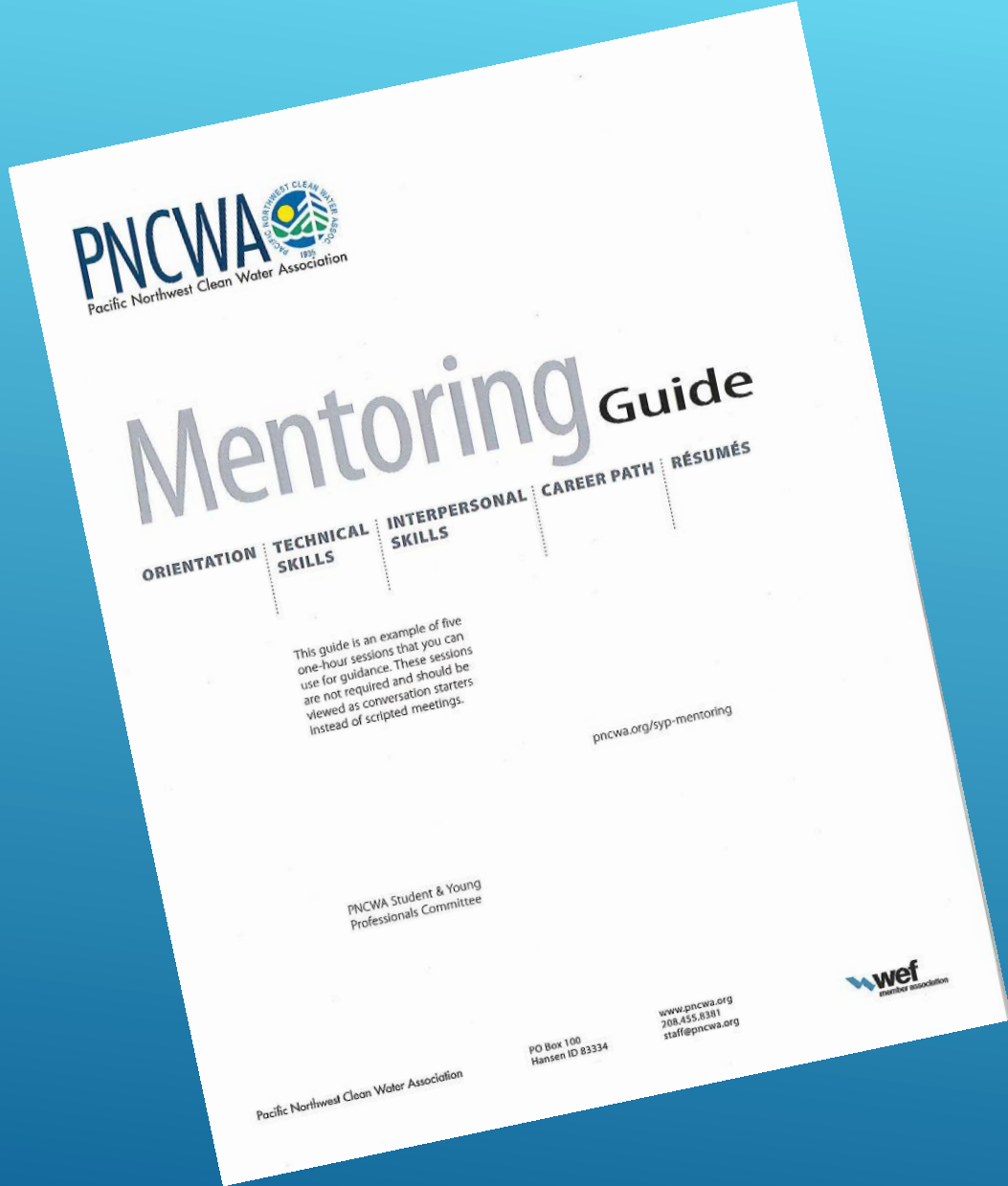


Wonder Women of  
Wastewater

Shannon Ostendorff Pam Randolph  
Dawn Hanthorn Catherine Dummer



TEAMWORK, COMMUNITY, AND  
SUPPORT



FIND A MENTOR- BE A MENTOR







CITY OF BEND





