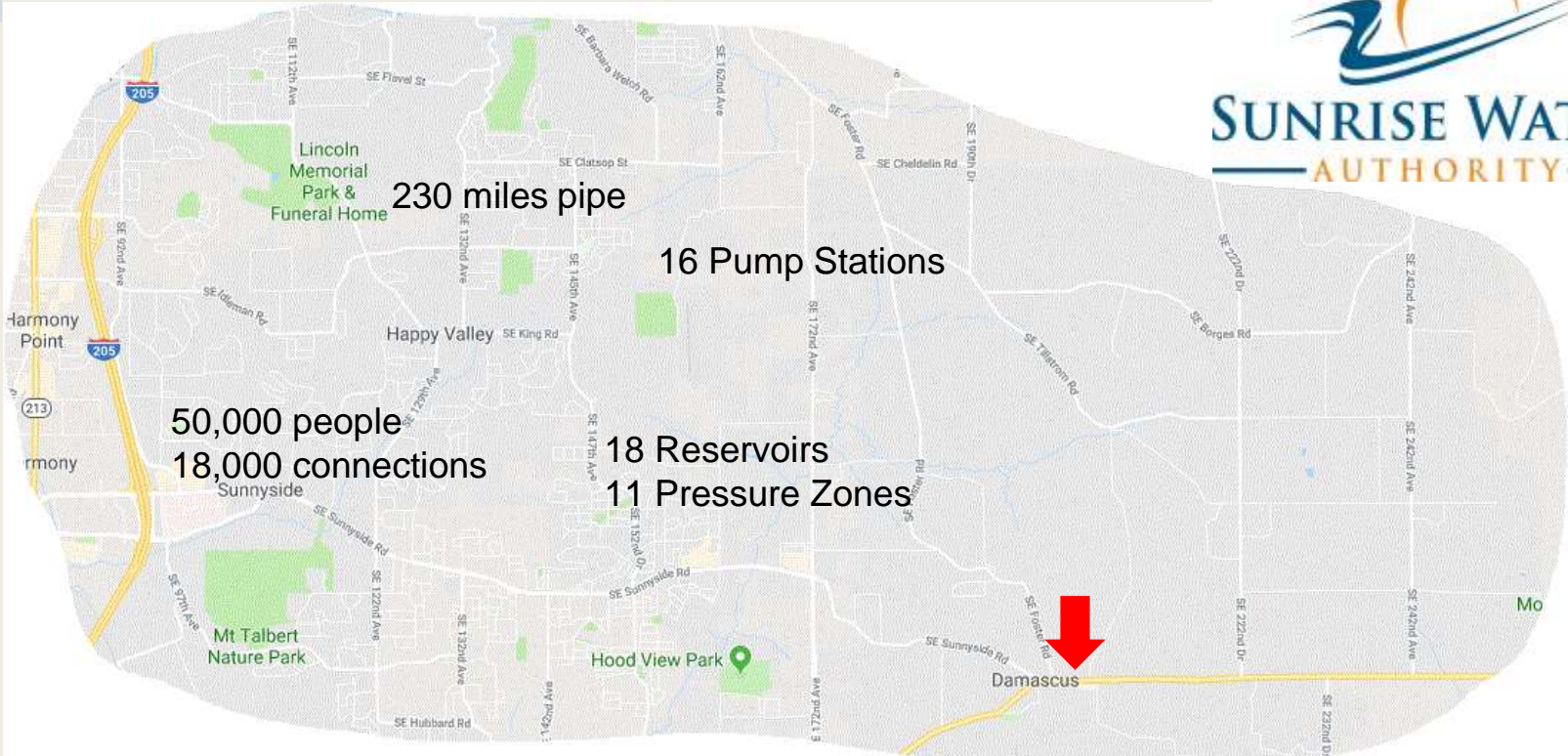


Level 2 Emergency

Elizabeth Edgar
Engineer/Capital Projects Manager

A Little Background



Before ... Just another day!

Sunday July 2, 2017



Oh no



Nearly 1 MG in 1 hour
16,500 gpm leak
at >100 psi

Drains reservoir and
'depressurized' zone

Destroys 300-400 feet
of west-bound lane and
bike path

The culprit



8-inch cast iron main

Previous Repair Band

Call to action.... Hello?



Level 2 Emergency ...



Emergency Call 911

Fire department first on scene

Initial Traffic Control

On Call Staff: On-site Coordinator

Stop/Throttle Leak (isolate)

Call Traffic Control (10 Flaggers)

Incident Command: Ops Manager

Assess Damage

Repair Leak and Restore Service

Develop Restoration Plan

Initial Steps ...



Repair broken pipe: On-call Contractor

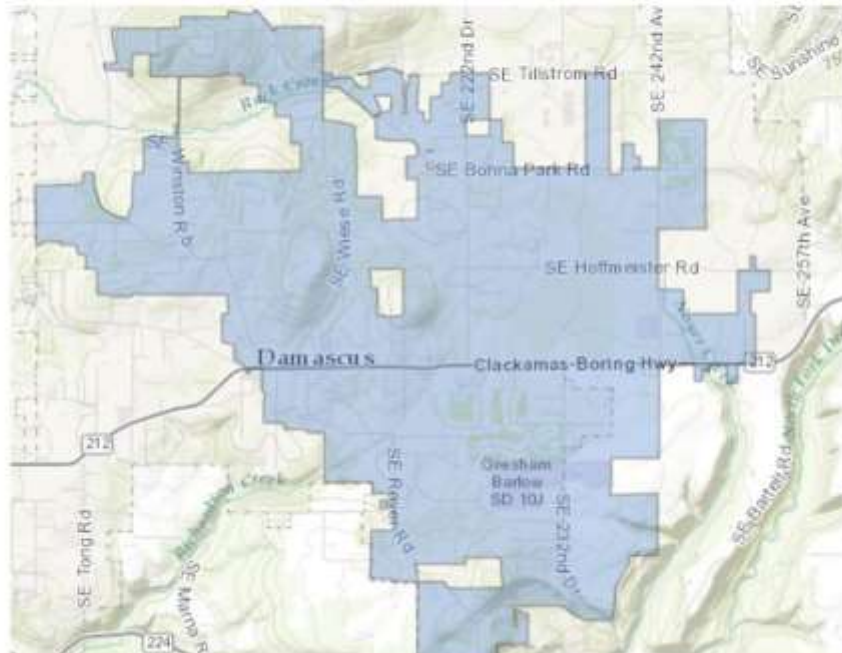


Restore Access (Release Trapped Cars)

Tough Call...

DRINKING WATER ADVISORY

A drinking water advisory for approximately 1500 accounts is in effect for Sunrise Water Authority customers in the community of Damascus. Areas affected are highlighted on the map below.



Reaching Out ...



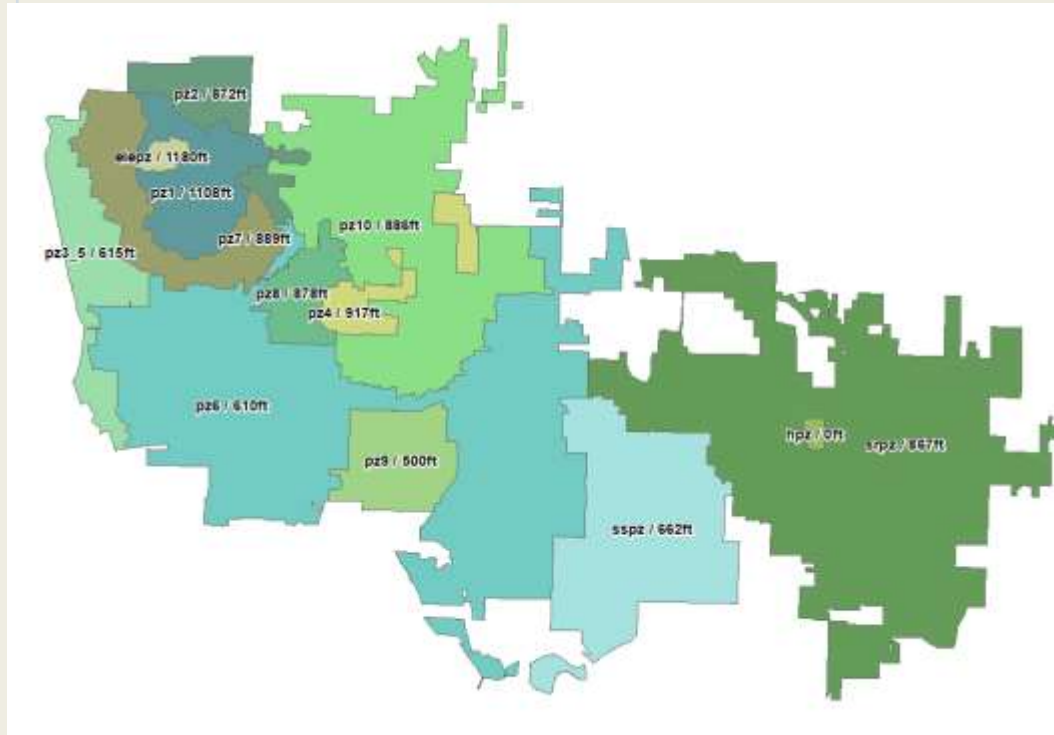
Messaging on Website and Facebook

Reverse Call ... at 11:00 pm?



News Release ...

Restoring Service



Pumping to Sunridge

~1,200 gpm from pump station

~1,000 gpm from wells

Restoring Service



Filled reservoir and began flushing (6 hours after loss)

Sampled distribution system by midnight (18-24 hour test)
Residents returned to full service Monday at 6 pm
Lifted General Boil Water Notice

Broken Section of Pipe Repaired (Sunday Night)

Samples went to lab on Monday morning
Businesses to full service Tuesday (July 4) morning

Media

hwy 212

By: Hannah Button

Updated: Jul 02, 2017 08:15 PM PDT



00:07 / 02:04

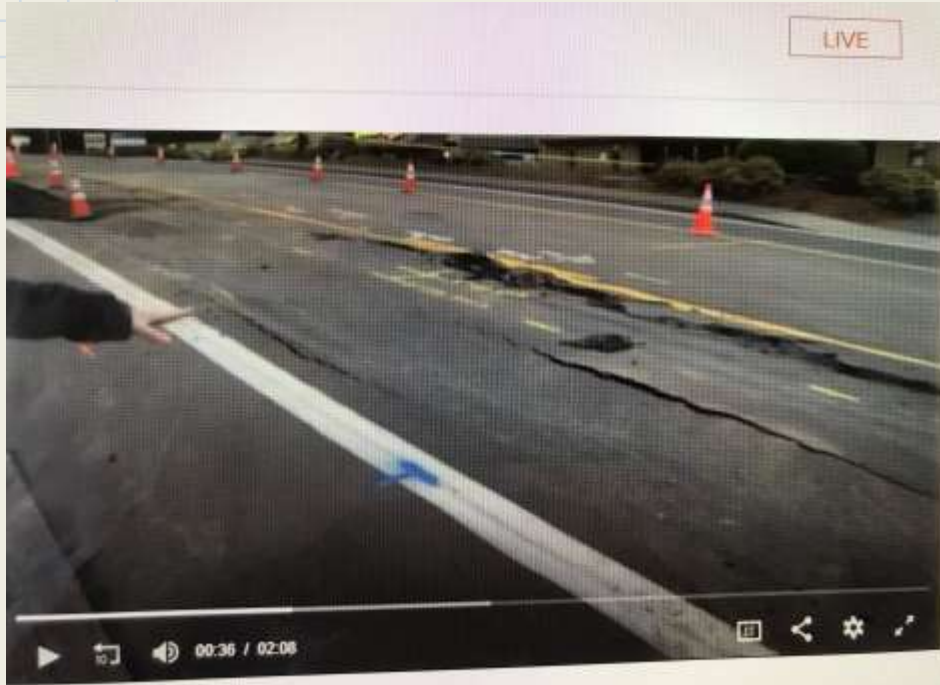


NEWS

Massive sinkhole shuts down Highway 212 in Damascus

DAMASCUS, Ore. — A massive sinkhole shut down [Highway 212 in Damascus Sunday evening](#), according to the Clackamas County Sheriff's Office.

Not good



Restoring the road

Hwy 212

By: Hannah Button

Updated: Jul 02, 2017 08:15 PM PDT



KOIN 6 News Staff - DAMASCUS, Ore. (KOIN) — About 1,500 water accounts with Sunrise Water Company were under a boil water notice because of a water main break in Damascus.

What was the most difficult resource(s) to obtain?

Restoring the road

Hwy 212

By: Hannah Button

Updated: Jul 02, 2017 08:15 PM PDT



KOIN 6 News Staff - DAMASCUS, Ore. (KOIN) — About 1,500 water accounts with Sunrise Water Company were under a boil water notice because of a water main break in Damascus.

What was the most difficult resource(s) to obtain?

Pavement Saw Cutting (18-inch asphalt)

Restoring the road



What was the most difficult resource(s) to obtain?

Pavement Saw Cutting (18-inch asphalt)

Paving Contractor (ODOT Specs)

And the traffic ...

HWY 212

By: Hannah Button

Updated: Jul 02, 2017 08:15 PM PDT



KOIN 6 News Staff - DAMASCUS, Ore. (KOIN) — About 1,500 water accounts with Sunrise Water Authority were under a boil water notice because of a water main break in Damascus.

By: Hannah Button

Updated: Jul 02, 2017 08:15 PM PDT



KOIN 6 News Staff - DAMASCUS, Ore. (KOIN) — About 1,500 water accounts with Sunrise Water Authority were under a boil water notice because of a water main break in Damascus.

Back to normal

Thursday July 6, 2017



Moving Forward...

Updated Emergency Response Plan

Active leak monitoring along vulnerable sections?

Targeted replacement of cast iron main with ODOT pavement projects