


Accessing Federal Storage to Meet Future Water Needs

Willamette Basin



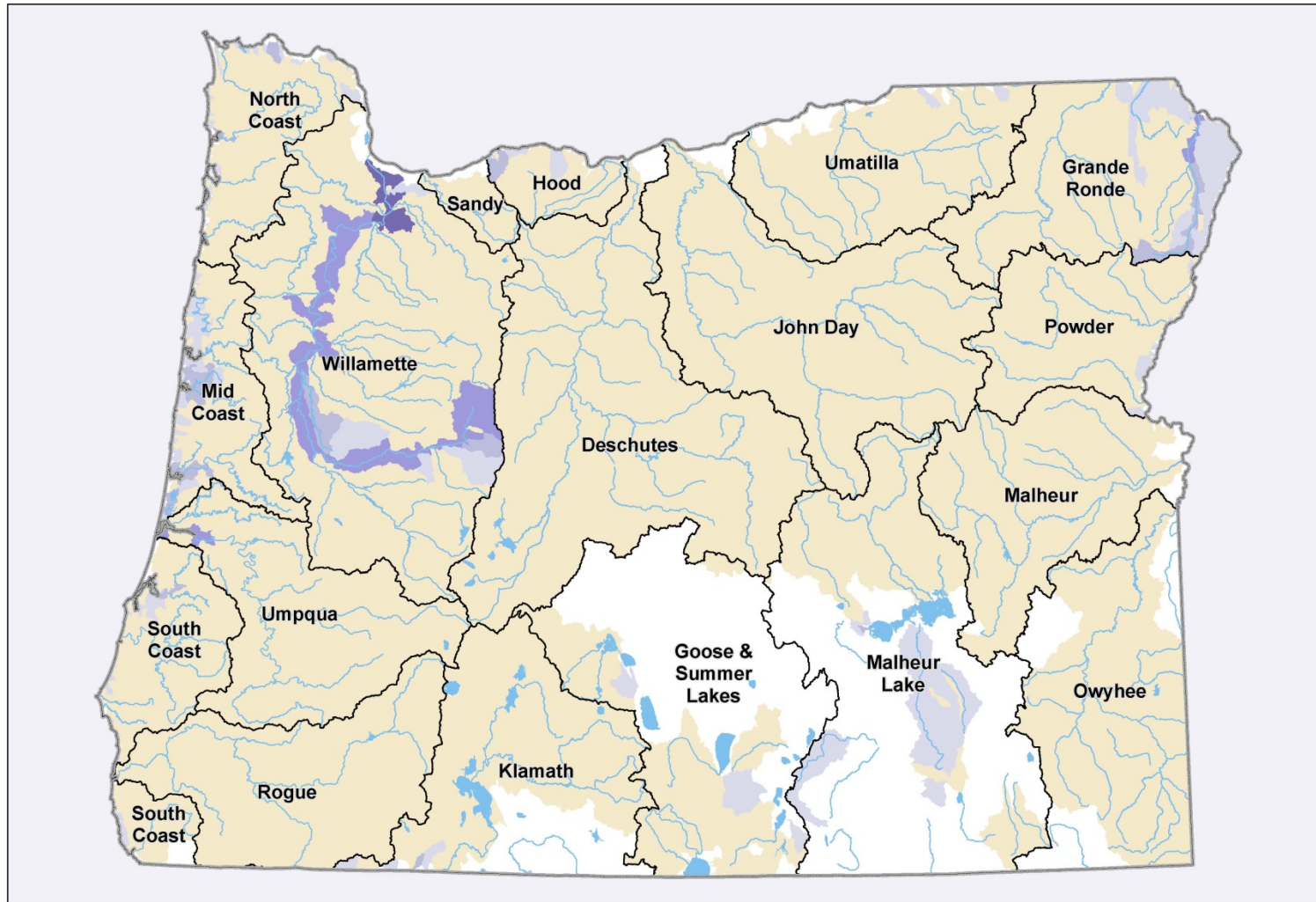
Photo: Don Hankins 

PNWS-AWWA Spring Conference – May 8, 2014
Technical Session: “How to Tap a New Water Source – Case Studies”

Outline

- The challenge of accessing new water today
- Storage in the Willamette Project
- The need to study reservoir uses and future water demands
- Barriers and impediments to accessing stored water
- Offer a formula for successful outcomes

Surface Water is Limited



August Available Streamflow Calculated at 80% Exceedance

OWRD Hydrographics (eco), 1/24/2013, Projection: Oregon Lambert NAD 83
This product is for informational purposes and may not have been prepared for or be suitable for legal, engineering, or surveying purposes. Users of this information should review or consult the primary data and information sources to ascertain the usability of the information.

Surface Water Bodies

- Lakes
- Streams

Administrative Boundaries

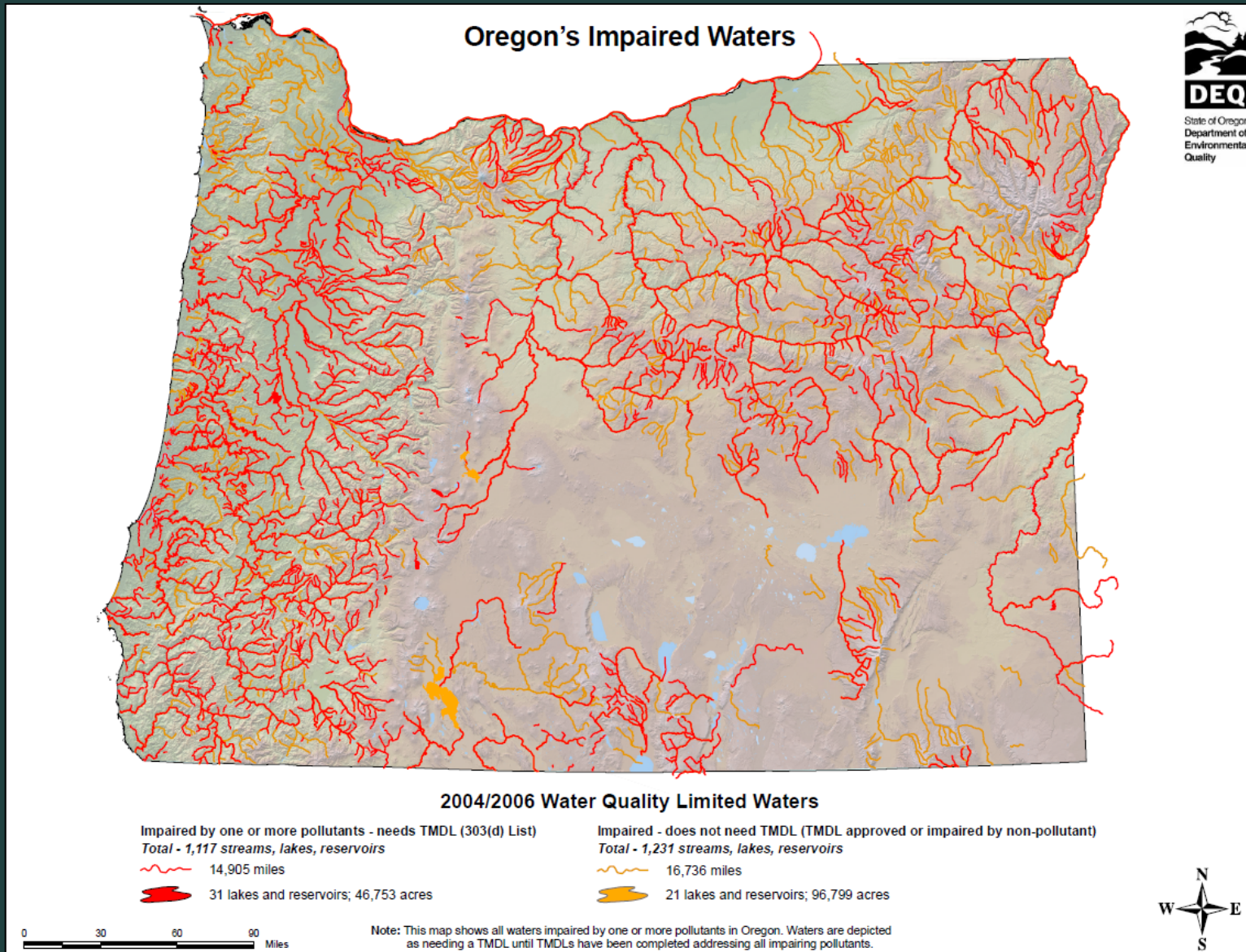
- OWRD Basins

Available Streamflow (CFS)

- No Data
- No Water Available
- 0.1 - 10
- 10.1 - 100

- 100.1 - 1000
- 1000.1 - 10000
- >10000

Surface Water Quality Issues



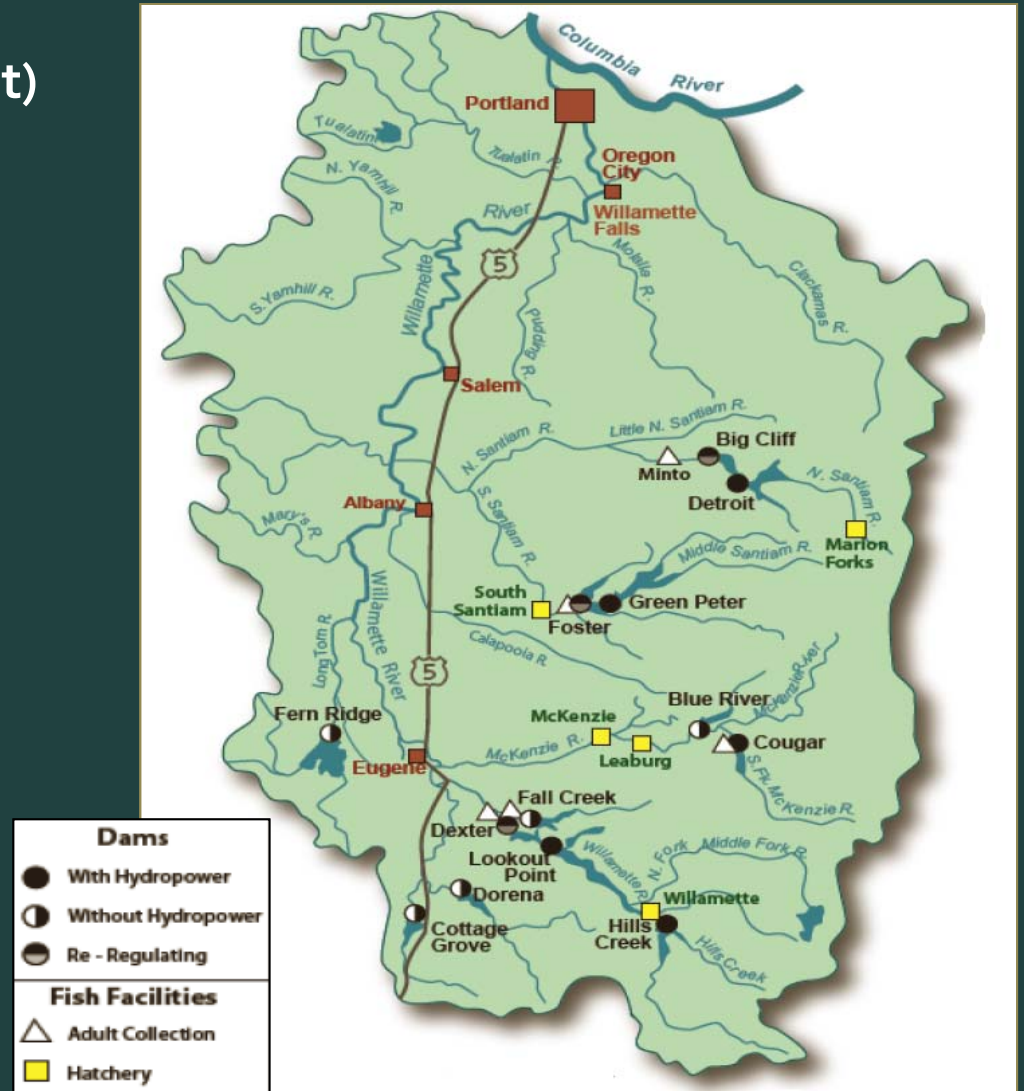
Is Storage Available in the Willamette Basin?

Willamette Valley Project

- 13 reservoirs (1.6 million acre-feet)
- 5 percent is contracted
- Water releases for fish & wildlife benefits

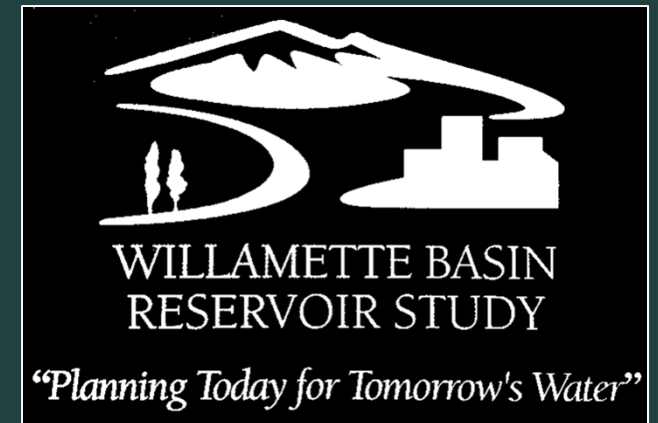
Willamette Basin

- Strong recreational demand
- Fastest growing area in the state
- Highly diverse & productive agricultural setting
- Several ESA-listed species



Access Storage in the Willamette Basin?

- Early recognition that changes are needed
- Reservoir Study initiated in 1996
- Suspended in 2000 (ESA listings)
- Biological Opinions issued in 2008
- Southern Willamette water providers re-initiate discussions & renew energy
- Adoption of the Integrated Water Resources Strategy in 2012
 - “Improve Access to Built Storage”
- The State is well positioned to re-launch the Study; federal funding is needed



Let's Start with a Pilot Reallocation!

- **Examine whether stored water is available for municipal & industrial (M&I) needs for a small community**
 - **Switch from “reallocation” to “surplus report”**
- **Municipalities key to moving forward; State had no \$\$ in 2013!**
- **Draft released for public comment in December 2013**
- **What we've learned so far: multiple layers of review, important to show progress nationally**
- **Positive Outcome: Purchase price for storage developed**