

# DOWNLOAD YOUR INSTITUTIONAL KNOWLEDGE

## GIS- A PLATFORM

Neal Fraser, GISP  
Gateway Mapping, Inc.



**GATEWAY  
MAPPING  
INC.**

a J.G.M. Company

# THE PROBLEM?

- Brain Drain
- Silver Tsunami
- Geezers gone fishin'



# THE WORKFORCE IS AGING

By 2020, 25 million Baby Boomers, who make up more than 40 percent of the U.S. labor force, will be exiting the workforce in large numbers and leaving many jobs to be filled. With their departure, the work characteristics that define the Baby Boomer generation — results-driven, ambitious, idealistic, competitive, optimistic, and people-oriented — may be lost unless companies creatively develop strategies to simultaneously retain older workers and transition their knowledge to younger workers (Morton, Foster, & Sedlar, 2005). These workers will also take decades of accumulated organizational knowledge with them, and this “brain drain” could result in the loss of key information about customers or practices that could be devastating to organizations (Pitt-Catsouphes & Matz-Costa, 2009).

Francine M. Tishman, Sara Van Looy, and Susanne M. Bruyère  
Employer Strategies for Responding to an Aging Workforce



# THE WORKFORCE IS CHANGING

- “If they aren’t ready, agencies risk permanently losing decades of expertise, eroding their ability to serve the public for years to come.”

– *Christopher Robbins,*  
[www.governing.com](http://www.governing.com)



**GATEWAY  
MAPPING  
INC.**

A J.G.M. Company

# ONE WAY TO BE PREPARED

- Geographic Information System
- It ain't your grandfather's ArcView GIS anymore.
  - Storage
  - Access
  - Integration



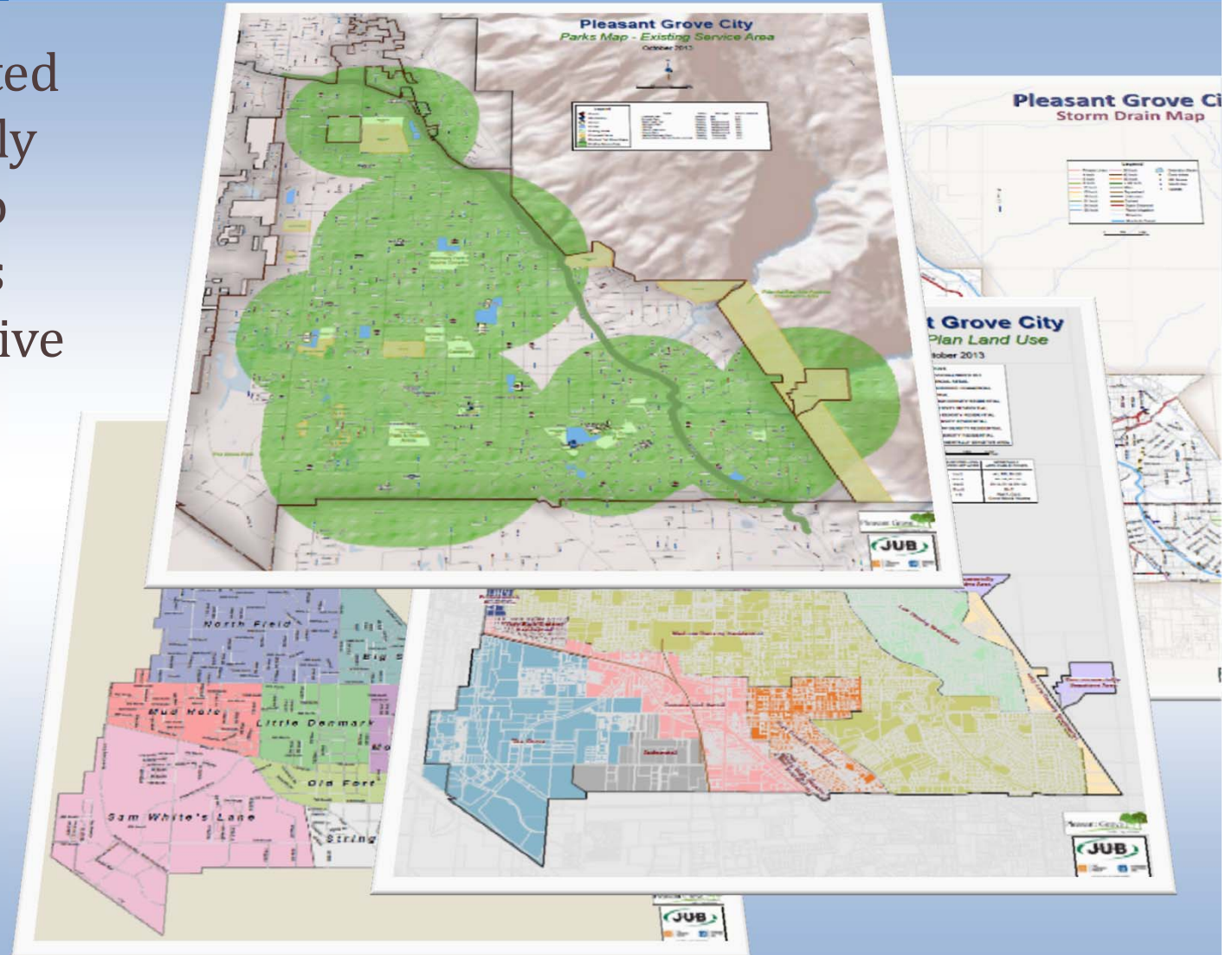
# STORAGE OF INFORMATION

- Leverage GIS technology as a repository to download institutional knowledge



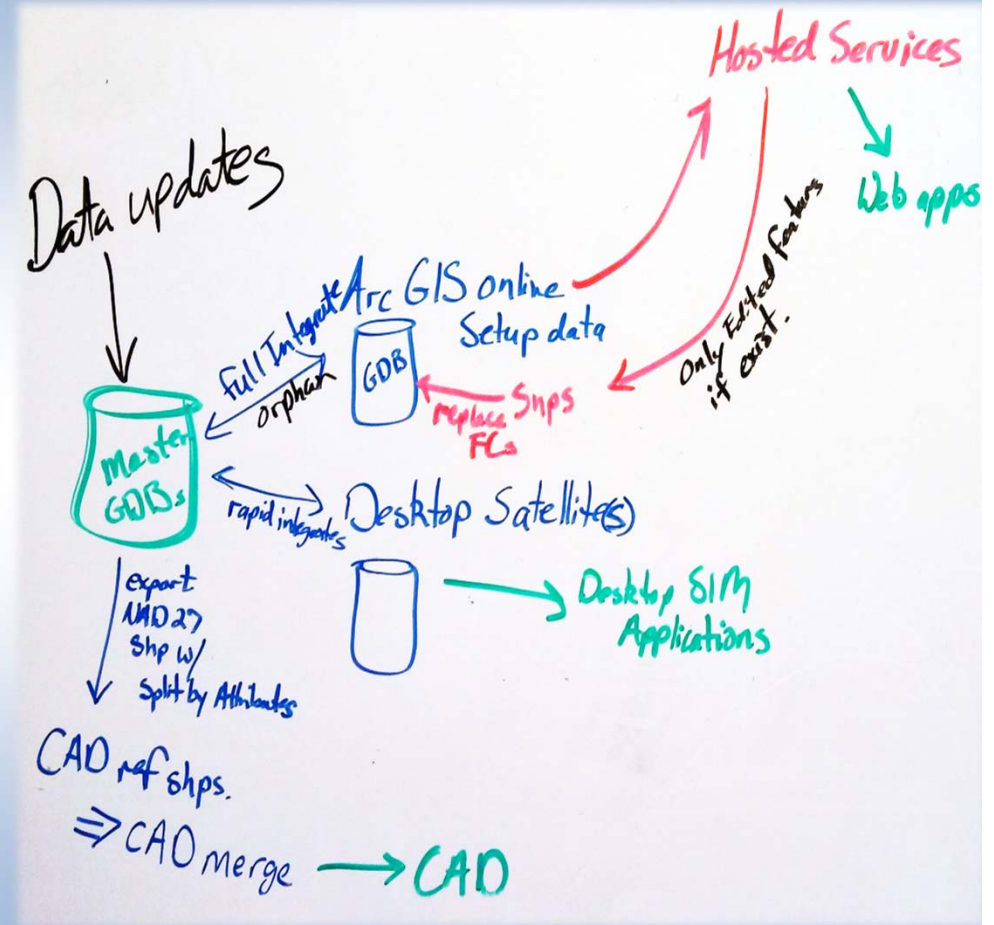
# ACCESS TO INFORMATION AND PROCESSES

Move from printed maps that quickly become dated to online webmaps that are interactive and available to more people



# INTEGRATE WITH OTHER DATA

- Online resources
- Existing database systems
- CAD
- Etc.





# CHALLENGES AND BENEFITS

- GIS can be somewhat complex
  - Limited resources
  - Need for flexibility
  - Staffing
  - Limited expertise
- GIS also offers tremendous benefits



# INVESTMENT IN THE FUTURE



**GATEWAY  
MAPPING  
INC.**

a J.G.M. Company

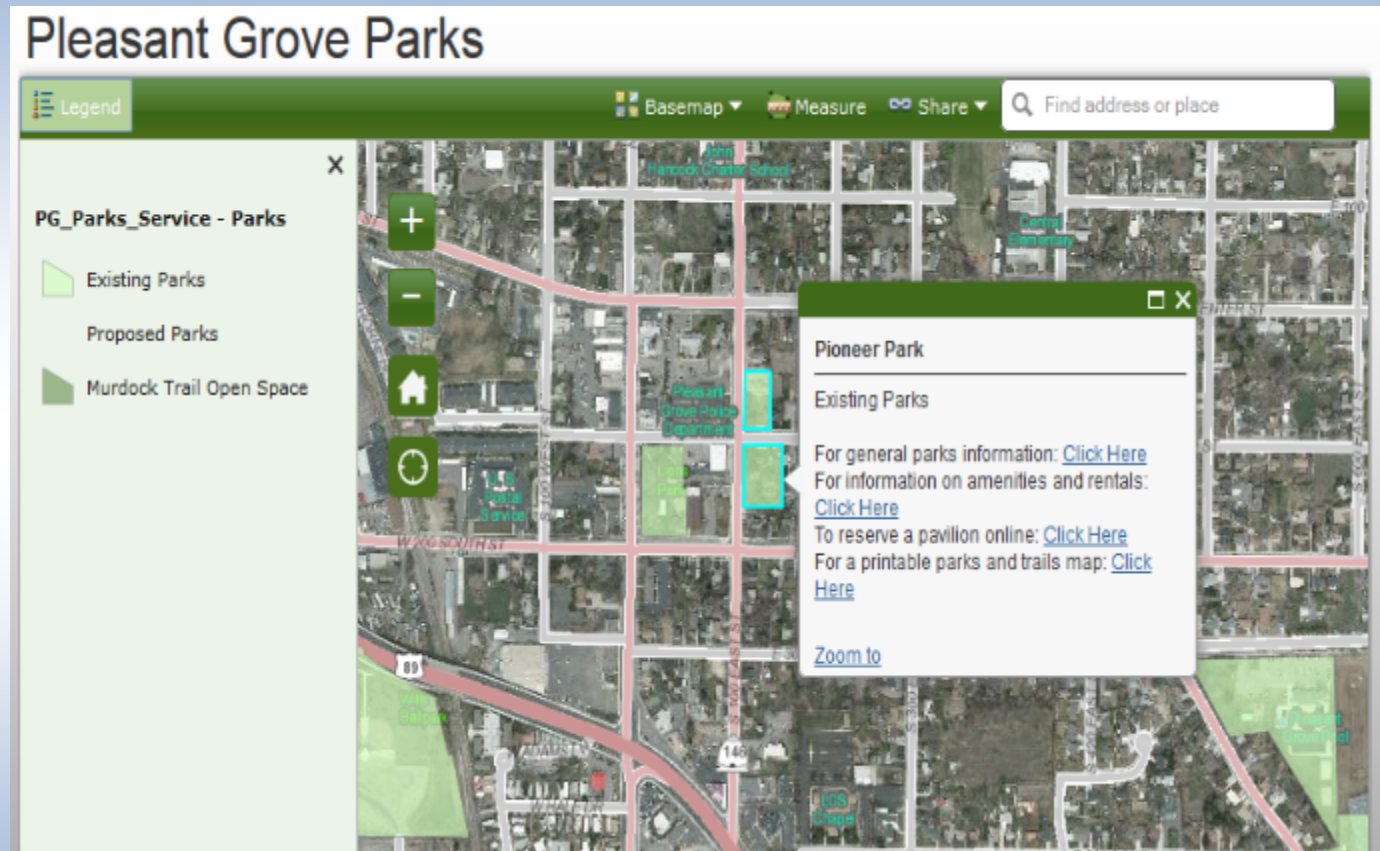
# IT'S ALL ABOUT THE DATA

We need  
good solid  
data that  
people can  
trust



# APPLICATIONS

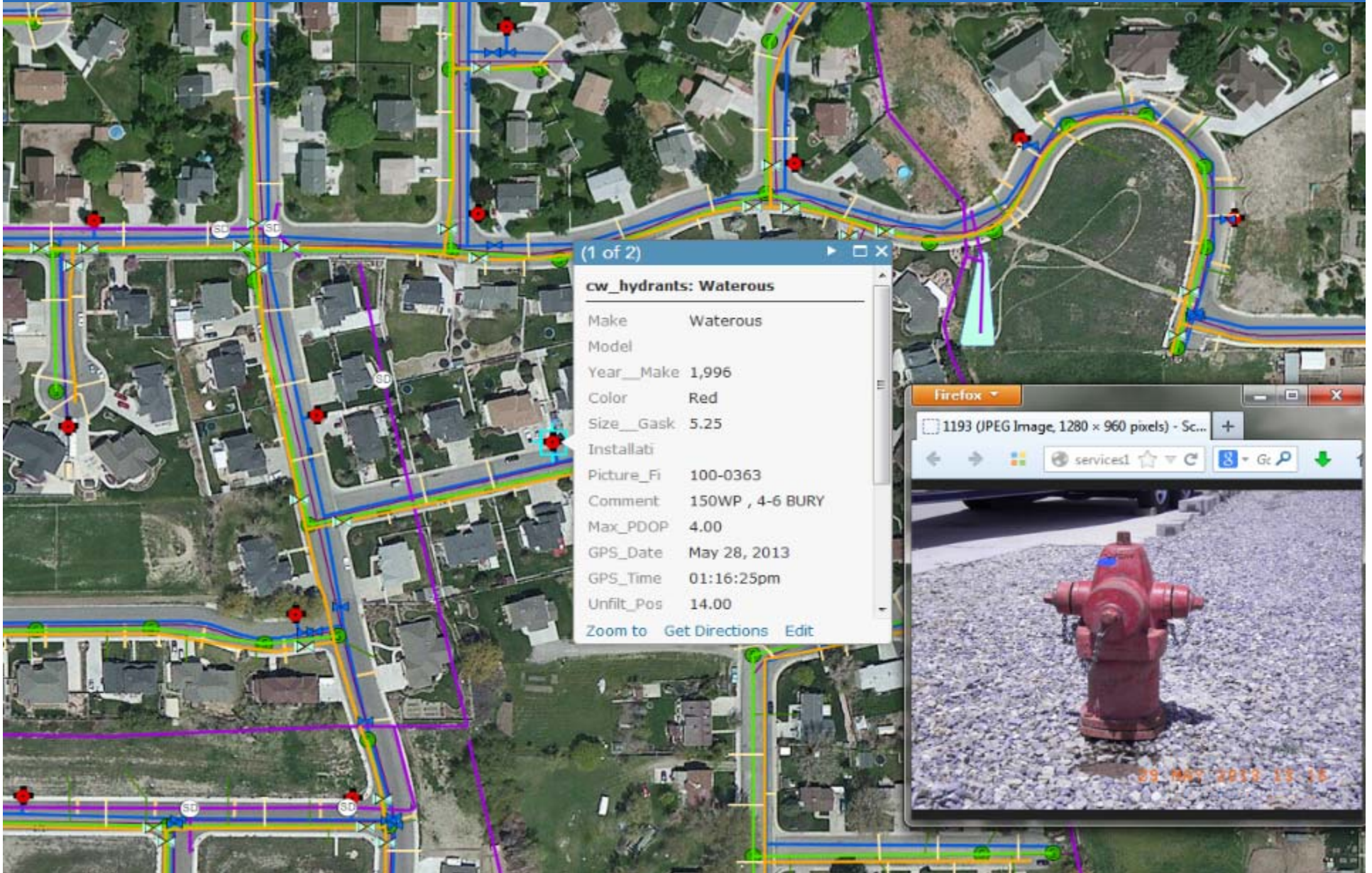
Good solid data leads to GIS applications that can increase efficiency



# PARKS AND RECREATION MANAGEMENT

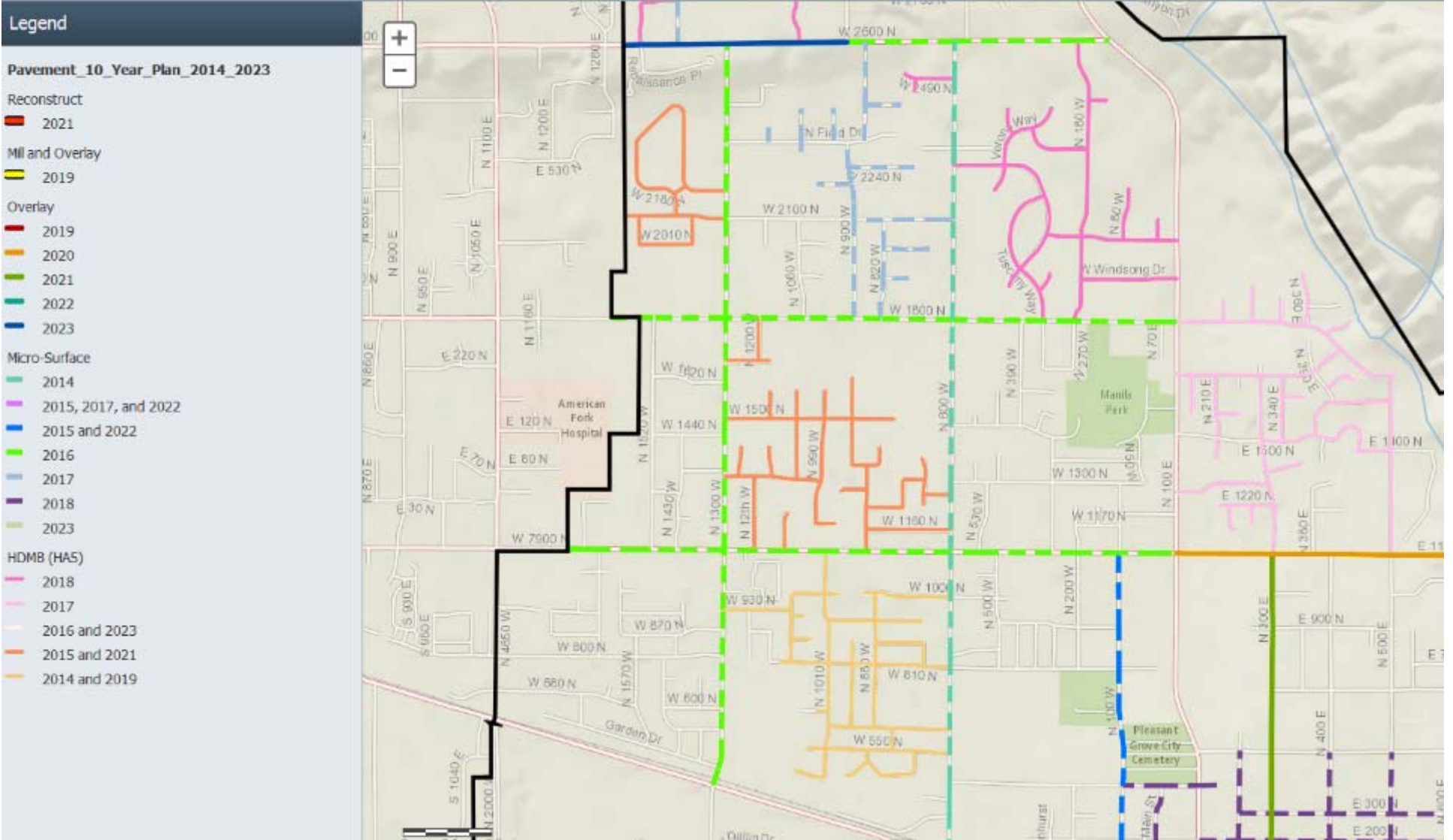


# FIRE HYDRANT INFORMATION

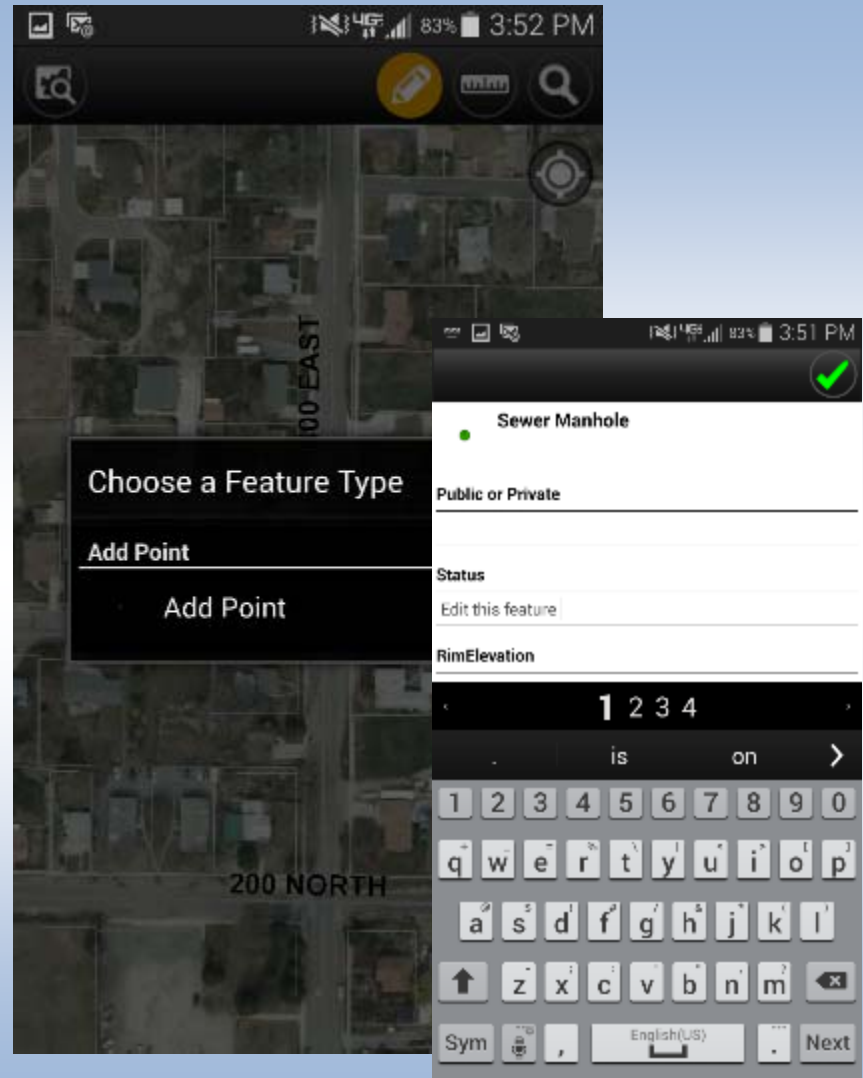
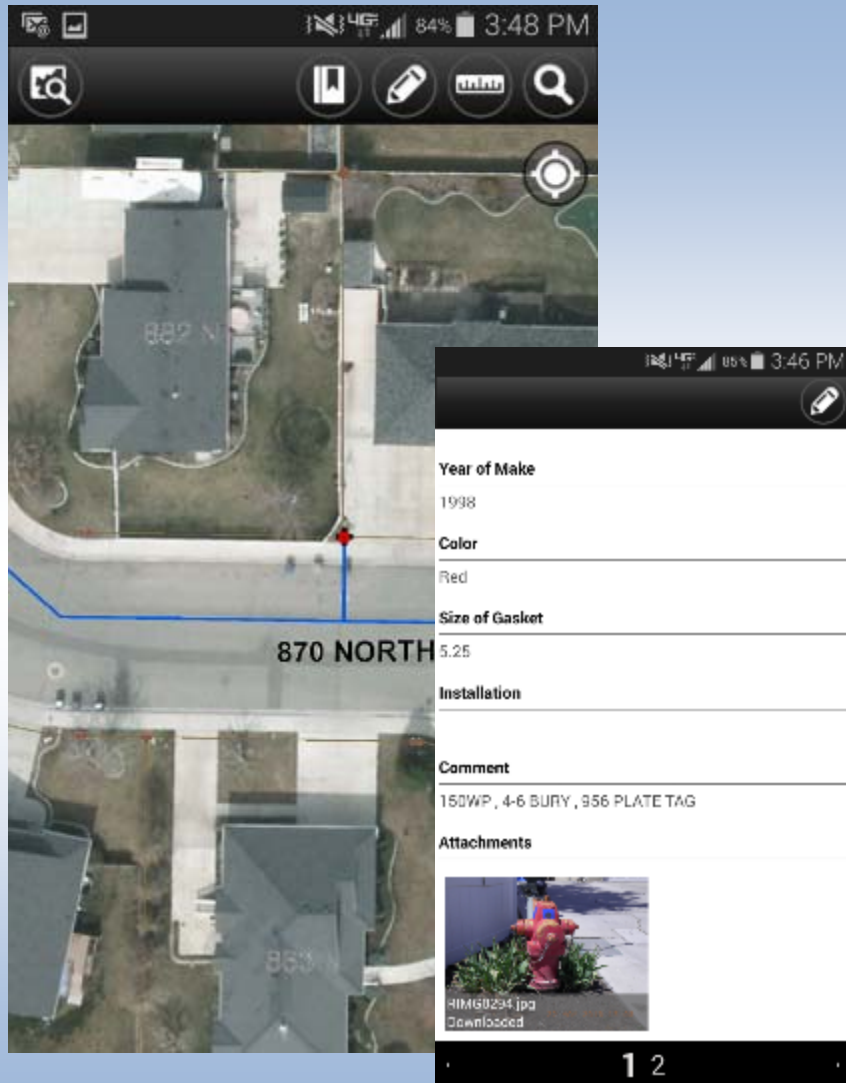


# PAVEMENT MANAGEMENT

## PG Pavement 10-Year Maintenance Plan Map

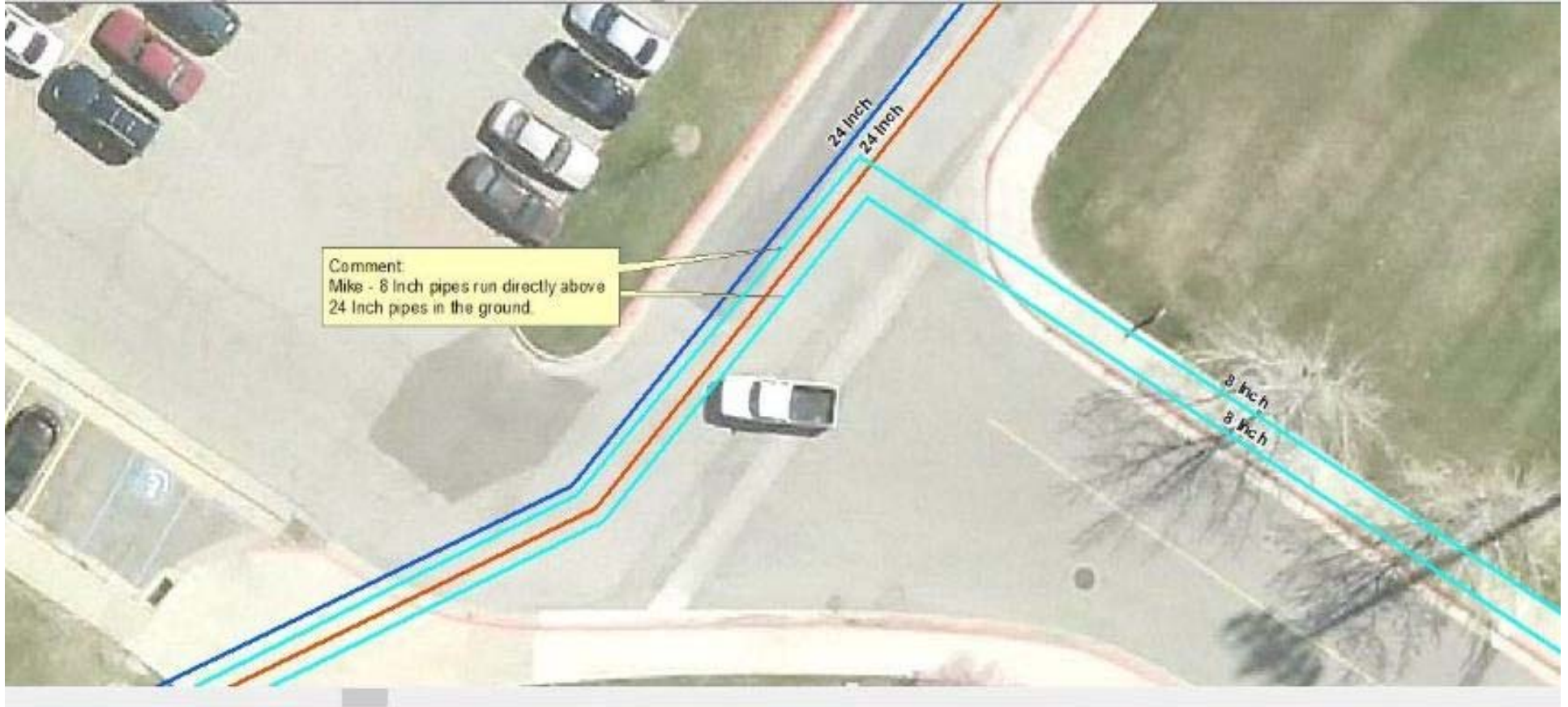


# MOBILE ACCESS





# WEBER STATE UNIVERSITY



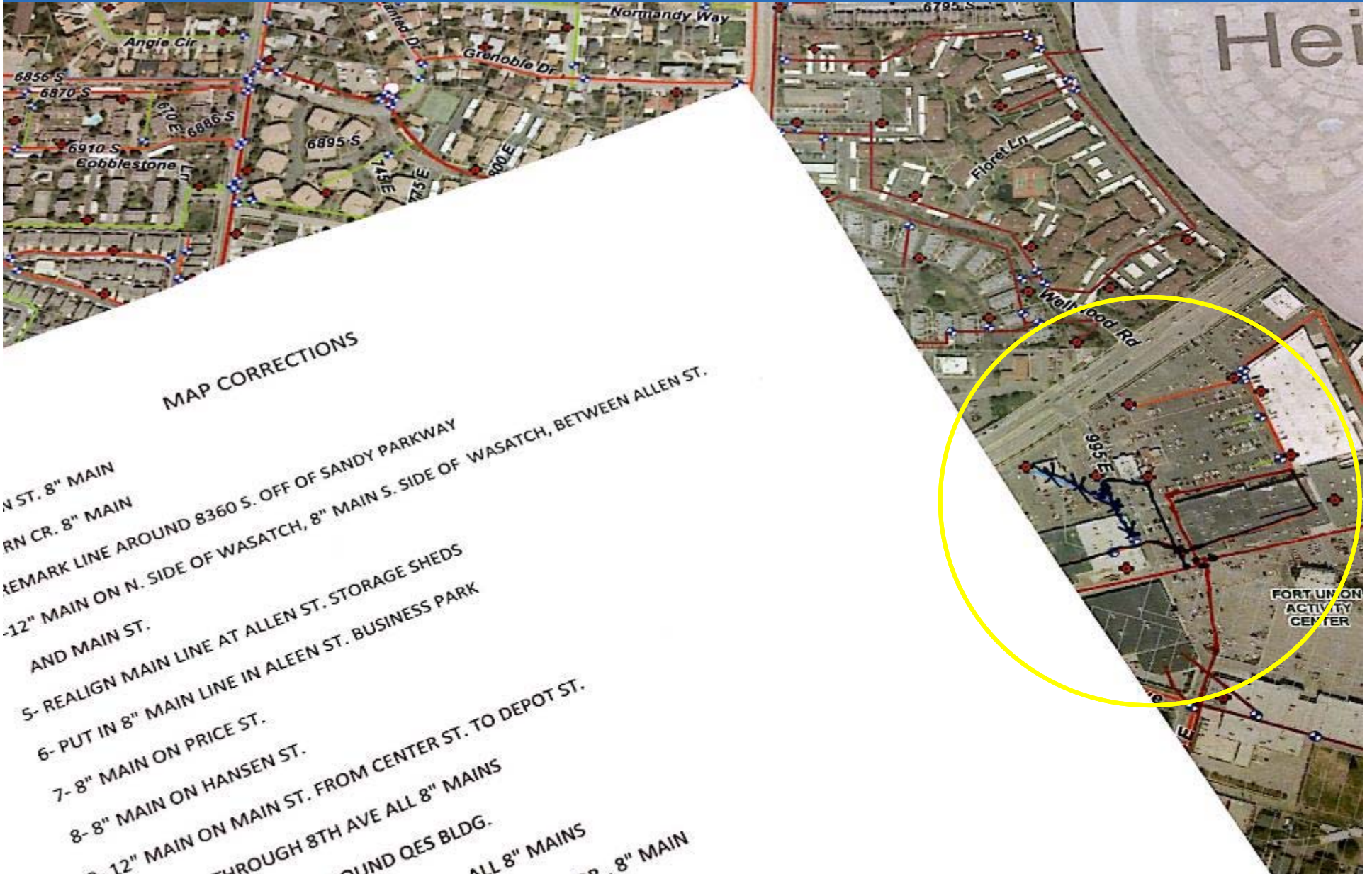
Comment  
Mike - 8 inch pipes run directly above  
24 inch pipes in the ground.



nes

Shape #	Entity	Layer	Shape_Length	Location	Size	Confidence	Ownership	Status	Material	Install_Date	Category	Comments
polyline Z	LWPolylines	C-CVTR-SITE	54.202625	Buried	<Null>	70	Weber State	Functioning	<Null>	<Null>	Return	<Null>
polyline Z	LWPolylines	C-CVTR-SITE	39.827453	Tunnel	<Null>	70	Weber State	Functioning	<Null>	<Null>	Return	<Null>
polyline Z	Line	DM-C-CVTR-SITE	698.355157	Buried	8	70	Weber State	Functioning	<Null>	<Null>	Supply	On top of 24 inch
polyline Z	Line	DM-C-CVTR-SITE	600.956085	Buried	24	70	Weber State	Functioning	<Null>	<Null>	Supply	<Null>
polyline Z	Line	DM-C-CVTR-SITE	600.85844	Buried	24	70	Weber State	Functioning	<Null>	<Null>	Return	<Null>
polyline Z	Line	DM-C-CVTR-SITE	707.043534	Buried	8	70	Weber State	Functioning	<Null>	<Null>	Return	On top of 24 inch
polyline Z	Line	DM-C-CVTR-SITE	202.240731	Buried	<Null>	70	Weber State	Functioning	<Null>	<Null>	Return	<Null>

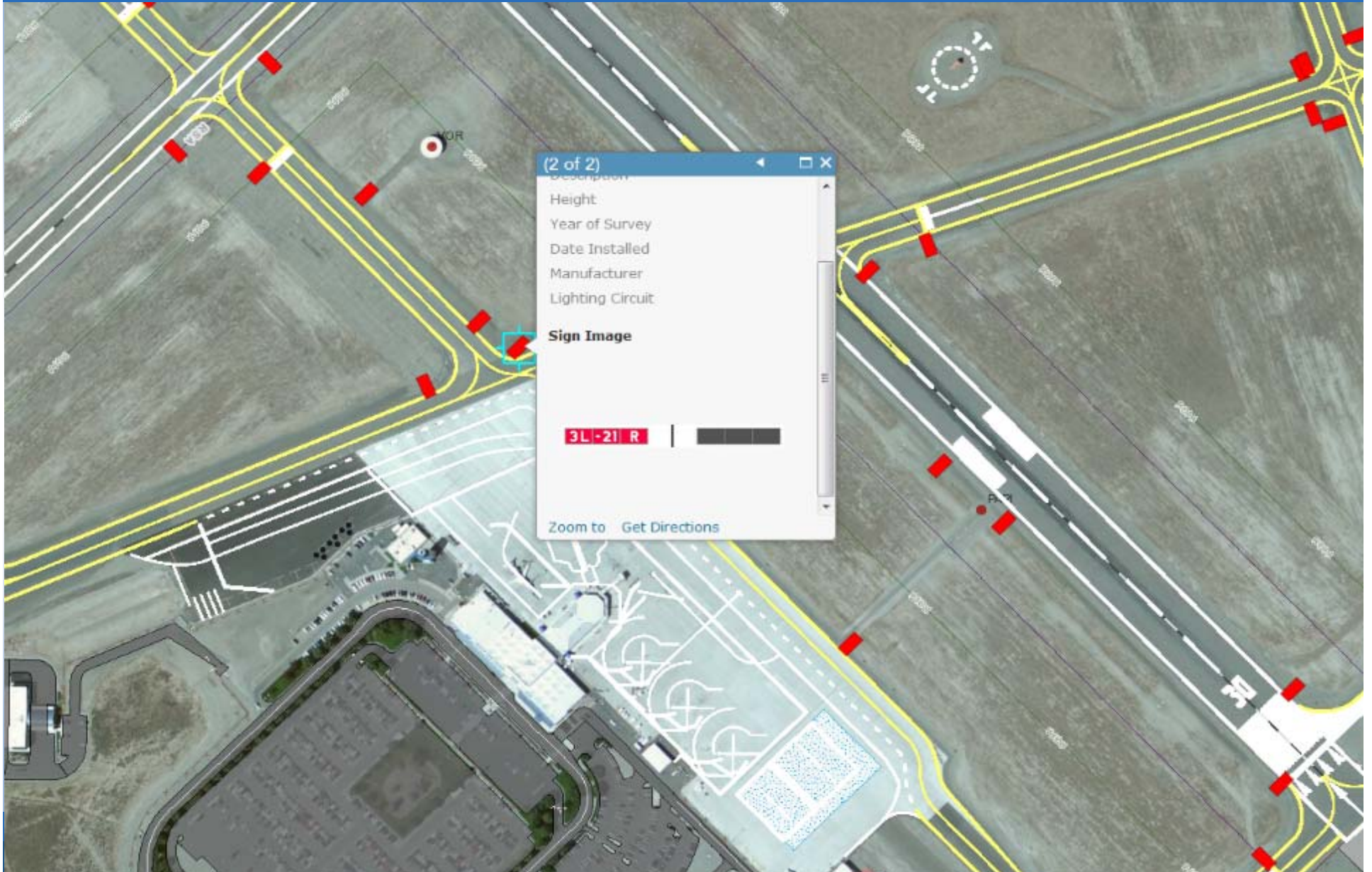
# MIDVALE CITY UTILITIES



## MAP CORRECTIONS

- 1- N ST. 8" MAIN
- 2- RN CR. 8" MAIN
- 3- REMARK LINE AROUND 8360 S. OFF OF SANDY PARKWAY
- 4- 12" MAIN ON N. SIDE OF WASATCH, 8" MAIN S. SIDE OF WASATCH, BETWEEN ALLEN ST. AND MAIN ST.
- 5- REALIGN MAIN LINE AT ALLEN ST. STORAGE SHEDS
- 6- PUT IN 8" MAIN LINE IN ALEN ST. BUSINESS PARK
- 7- 8" MAIN ON PRICE ST.
- 8- 8" MAIN ON HANSEN ST.
- 9- 12" MAIN ON MAIN ST. FROM CENTER ST. TO DEPOT ST.
- 10- THROUGH 8TH AVE ALL 8" MAINS
- 11- AROUND QES BLDG.
- 12- ALL 8" MAINS
- 13- 8" MAIN

# AIRPORTS GIS



# AIRPORT UTILITIES



# DISCUSS

- What is your organization doing with GIS?
- What benefits have you seen if you've implemented GIS?
- What does your workforce look like and what will it look like in 5 years?
- What could you do with GIS that would save you heartache in the future?



# CONCLUSION

Thank you!

Neal Fraser, GISP  
Gateway Mapping, Inc./J-U-B Engineers  
240 W. Center STE #200  
Orem, Utah 84057  
801-226-0393  
nfraser@jub.com



**GATEWAY  
MAPPING  
INC.**

a J.U.B. Company

# REFERENCES

- <http://www.governing.com/topics/mgmt/gov-governments-silver-tsunami.html>
- [http://www.dol.gov/odep/pdf/NTAR\\_Employer\\_Strategies\\_Report.pdf](http://www.dol.gov/odep/pdf/NTAR_Employer_Strategies_Report.pdf)
- [http://www.accenture.com/SiteCollectionDocuments/PDF/CPS\\_AgeBubble\\_ExecutiveSummary.pdf](http://www.accenture.com/SiteCollectionDocuments/PDF/CPS_AgeBubble_ExecutiveSummary.pdf)

