



City of Cottage Grove

Middlefield Golf Course

MSA
Morris, Smith & Associates, Inc.
Engineers Planners
Portland, Oregon

**Potential Class A
Effluent Irrigation Sites**

09-1040.101

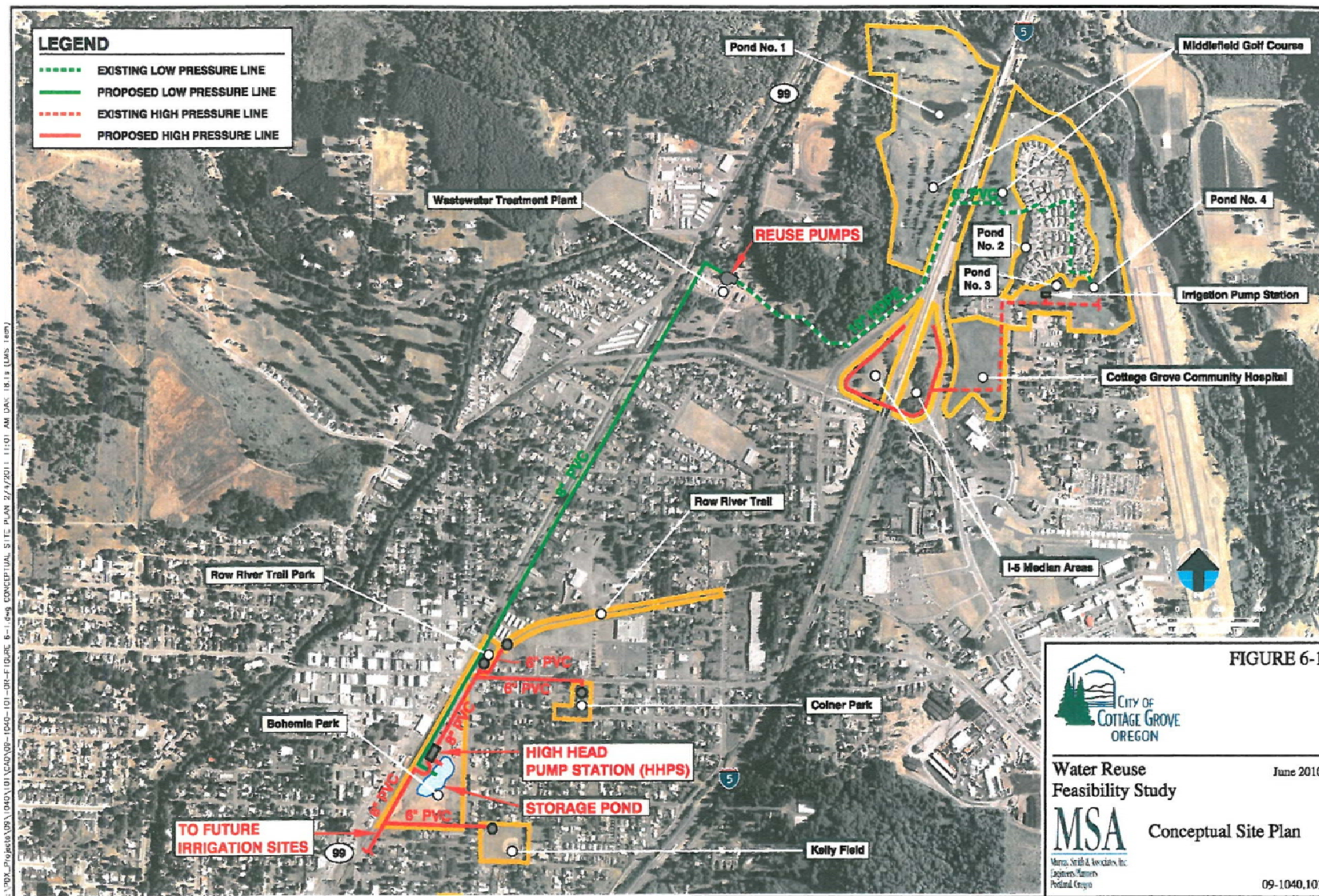


FIGURE 8-1



Water Reuse
Feasibility Study

June 2010



Irrigation Pond and
High Head Pump Station
Preliminary Site Plan

Morris, Smith & Associates, Inc.
Engineers/Planners
Portland, Oregon

09-1040.101

LEGEND

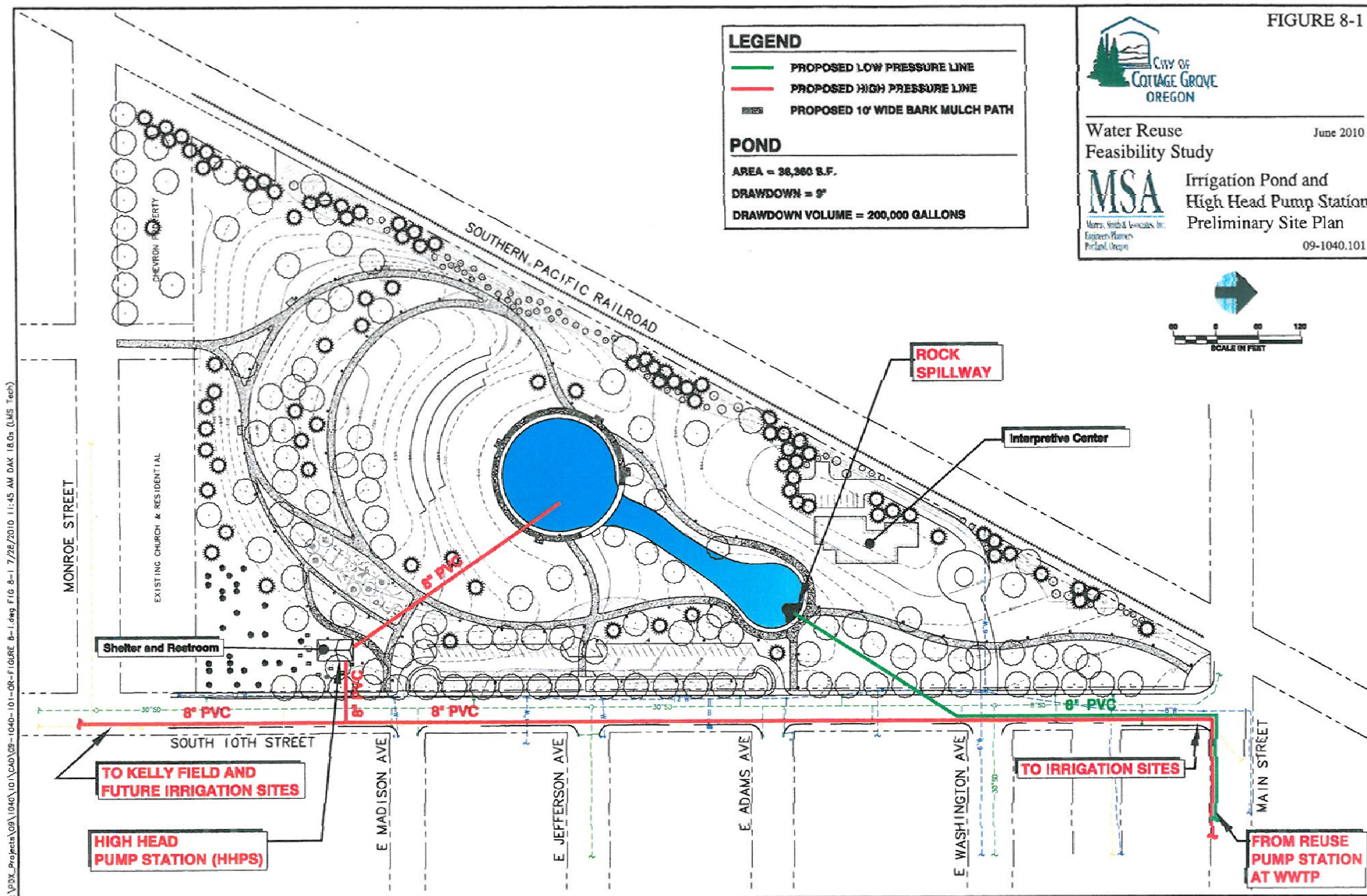
- PROPOSED LOW PRESSURE LINE
- PROPOSED HIGH PRESSURE LINE
- PROPOSED 10' WIDE BARK MULCH PATH

POND

AREA = 38,360 S.F.

DRAWDOWN = 9'

DRAWDOWN VOLUME = 200,000 GALLONS



C:\VDRX_Projects\09\1040\101\09-1040.101.dwg F10 8-1 7/28/2010 11:45 AM DAK 18.0x (LMS Tech)