

Permitting 101 Oregon Overview

Adam Sussman, GSI Water Solutions
PNWS – AWWA Spring Conference
May 7, 2014



Obtaining a New Permit is Hard!

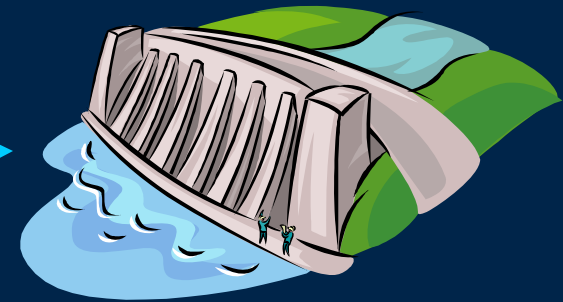
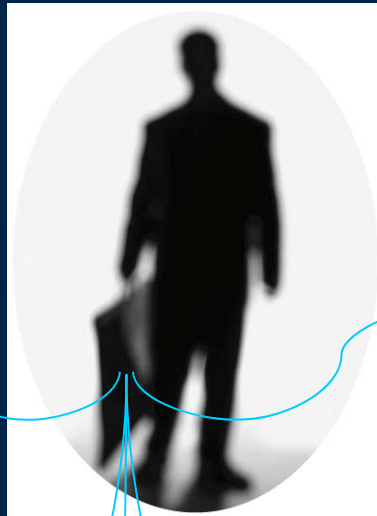
- Allowable in the basin program
- Water is available
- Will not injure other water rights
- Complies with rules of Water Resources Commission – Division 33 (listed species)

The “easy” water is gone

- Surface Water Not Available
- Restrictive Basin Programs
- Declining Ground Water Levels
- Conjunctive Management of GW/SW
- Listed Fish Species – Division 33
- Peak and Ecological Flows
- Fish Passage
- Water Quality – Division 33



Groundwater



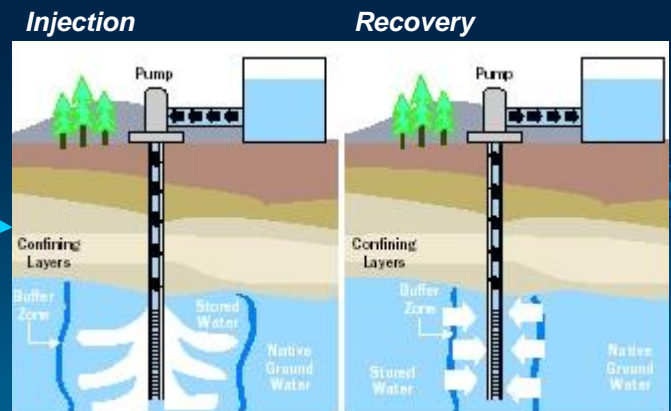
Surface Storage



Surface Water



Conservation



Aquifer Storage and Recovery

Surface Water Supply “new permit”

- Basin Program Exception
- Redundancy – different not more
- Short season permits – supply diversity
- Conditioned permits
- Mitigation - cancellation, forbearance, etc.
- Use of stored water

Surface Water Supply “water right transfer”

- Same source, no injury, no enlargement
 - Downstream transfer
 - Upstream transfer – may need mitigation
 - MOU to share in development of permit
 - Transfer of stored water
 - “Replacement” - stored water for live flow

Groundwater Supply “new permit”

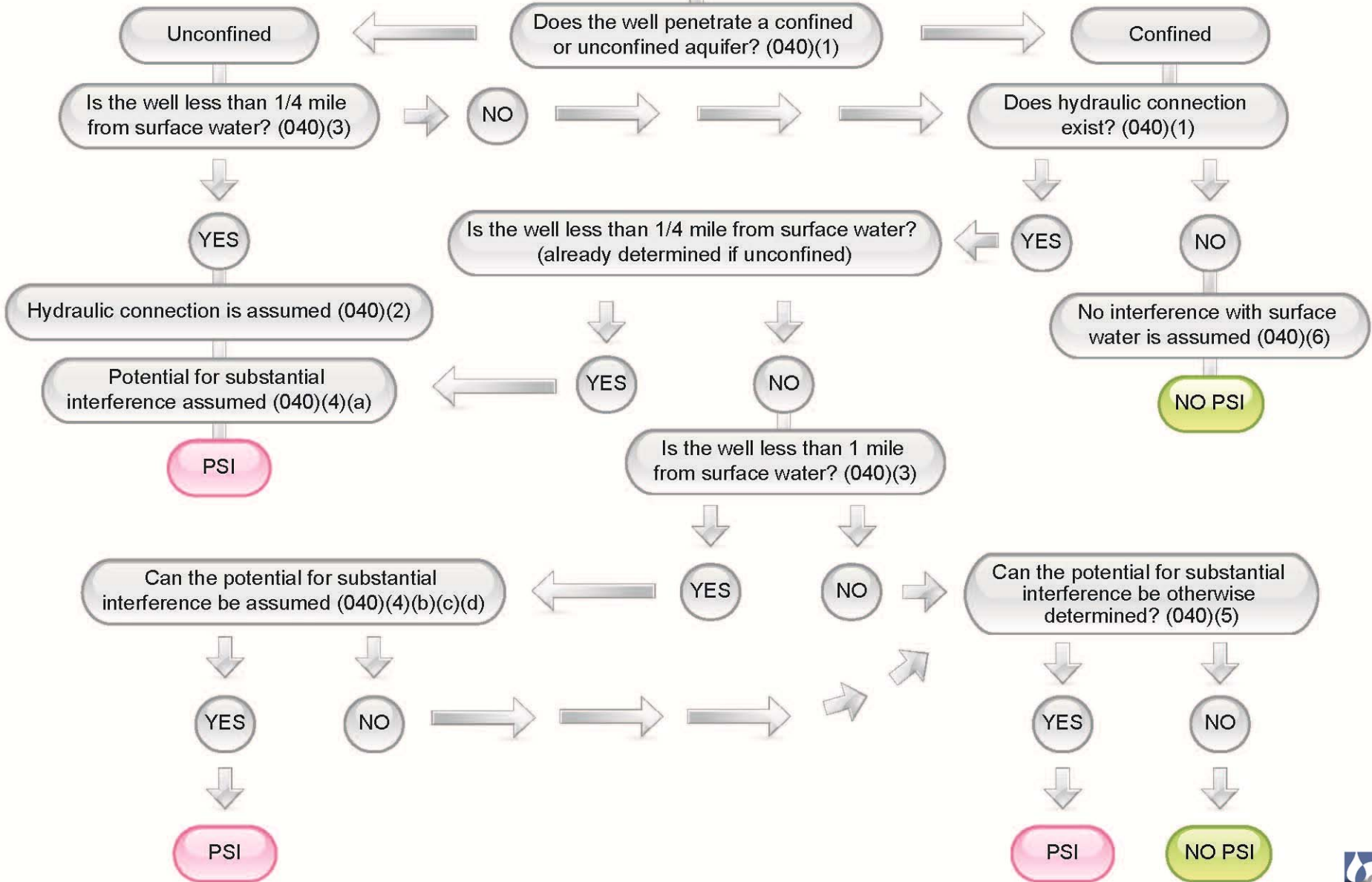
Division 9 – Conjunctive Management
Between $\frac{1}{4}$ and 1 mile from SW

PSI Assumed if hydraulically connected and:

- rate greater than 5 cfs
- rate greater than 1% of instream water right or 80% exceedance flow
- calculated stream depletion greater than 25% of rate after 30 days

THE DIVISION 9 REVIEW PROCESS

Groundwater Application or Permit Assigned to Hydrogeologist - Office Research



Groundwater Supply “new permit”

- Demonstrate NO hydraulic connection
- Location, location, location.....
- Rate of appropriation – 5 cfs and 1%
- Season of use
- Mitigation – cancellation, forbearance, etc.

Groundwater Supply “water right transfer”

- Transfer - same source, no injury no enlargement
 - Consider policy implications
 - Land use and easement considerations
 - Understand limits on original right
 - Shaping of water right

Conclusion

