

DEVELOPING A NEW PARTNERSHIP FOR A NEW REGIONAL WATER SUPPLY

PNWS-AWWA Annual
Conference
May 7, 2014



Tualatin Valley Water District



Presentation Overview

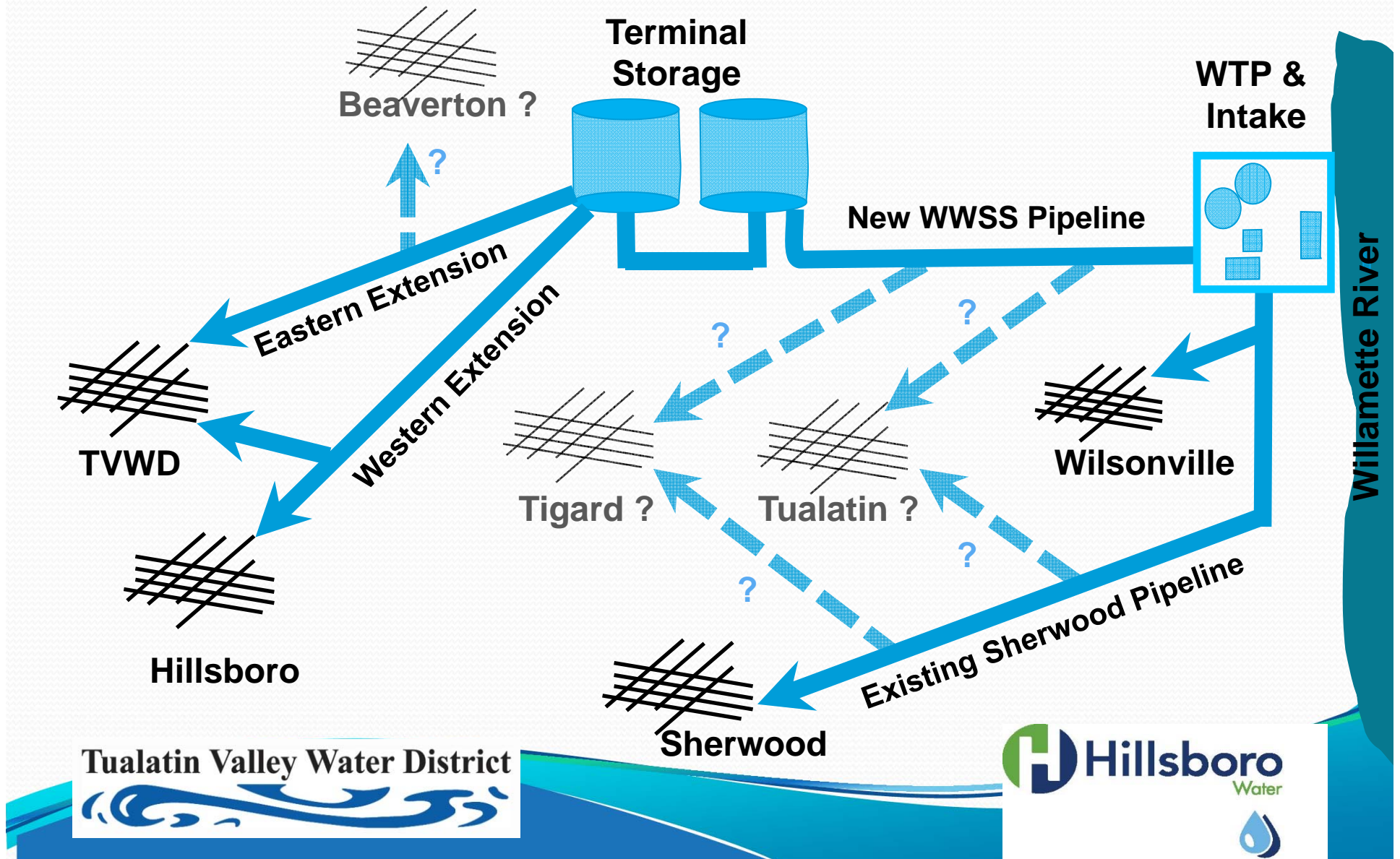
- Background
- Partners
- Ongoing Projects & Activities
 - Willamette Water Supply Program Preliminary Design
 - SW 124th Avenue
 - Public Affairs
 - Public Outreach
 - Governance
 - Program Administration & Coordination
- Questions



Willamette Water Supply A Regional Resource

- **1970's** – Water Rights and Studies
- **1990's** – Regional Water Supply Plan, Pilot Plant, and Water Quality Monitoring
- **2000's** – More Water Quality Monitoring, Land Purchase, Willamette River Water Treatment Plant Construction, Transmission Pipeline Studies, Water Treatment Plant Site Master Plan, and City of Sherwood.
- **2010's** – More Transmission Pipeline Studies, Hillsboro Study, and Hillsboro & TVWD Decisions

Willamette Water Supply System Schematic



Willamette Water Supply Program

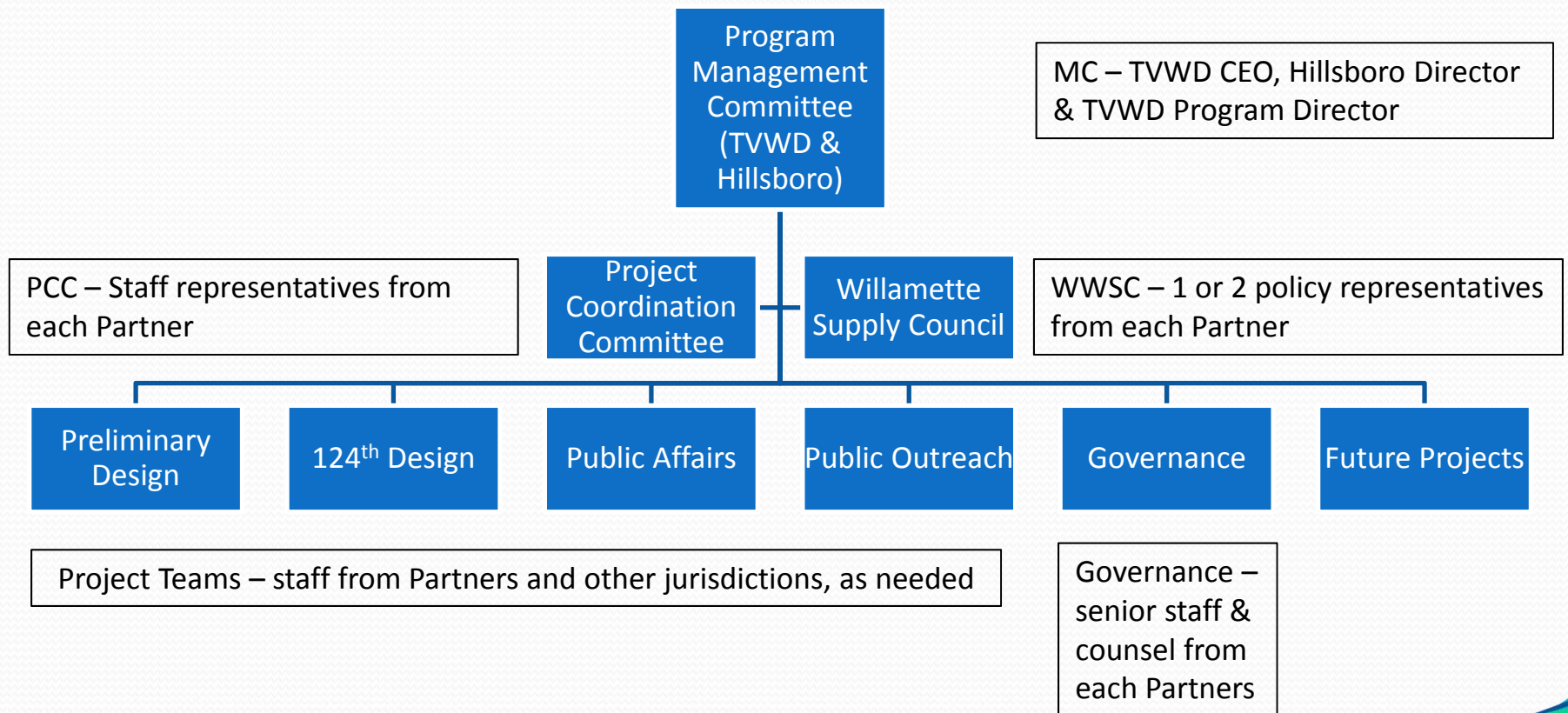
A Regional Partnership

- TVWD & Hillsboro
 - All program elements, projects & activities
- Cities of Tualatin, Tigard & Beaverton
 - Preliminary Design
 - Governance
 - Technical Advisory Committees
- Cities of Wilsonville & Sherwood
 - Governance & Technical Advisory Committees
- Washington County
 - 124th Avenue & other project opportunities

Tualatin Valley Water District



Willamette Water Supply Program Interim Program Organization



Tualatin Valley Water District



Willamette Water Supply Program Preliminary Design Project

- Preliminary design of water supply system
- Scope includes:
 - 25+ miles of large diameter transmission pipelines
 - 45 MG terminal storage reservoir(s)
 - 90+ MGD water treatment plant expansion

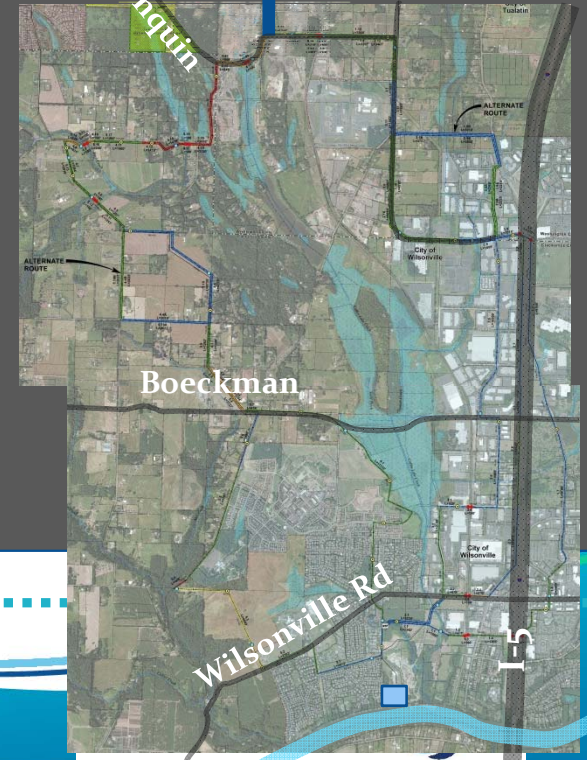
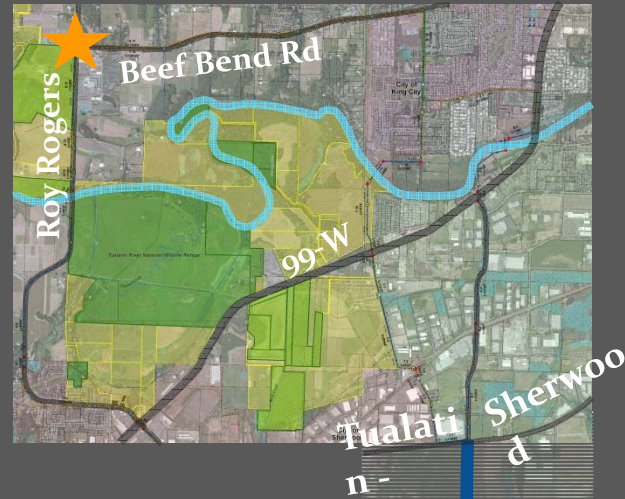


Willamette Water Supply Program Preliminary Design Project

- Work consists of:
 - Evaluation of water transmission line alignment options
 - Evaluation of terminal storage sites
 - Identification of and coordination with key stakeholders
 - Identification of permitting requirements
 - Development of engineering guidelines and requirements
 - Identify proposed schedule
 - Prepare updated cost estimate



SW 124th Avenue opportunity



Tualatin Valley Water District



Willamette Water Supply Program 124th Ave Transmission Line Design

- Developed in conjunction with Washington County project to extend 124th Avenue
- “Corridor of opportunity” could save \$30-\$75 million
- Pipeline 60% design completed in January 2014
- Washington County proceeding with property acquisition
- After property acquisition, roadway & pipeline designs to be finalized; construction in 2015 and 2016



Willamette Water Supply Program Public Affairs

- Strategic planning and coordination with key stakeholders and policy-makers
- Stakeholder interviews
- Crisis Communications Plan
- Coordination with Delegation
- Coordination on program permitting
- Coordination with regional stakeholders

Willamette Water Supply
Our Reliable Water

*Why we need it.
How we will build it.*

Tualatin Valley Water District



Willamette Water Supply Program Public Outreach

- Strategy, information and resources for public communication during initial program projects
- Outreach plan
- Communications materials
- Public opinion research plan
- Communications database



Willamette Water Supply Program Public Outreach

The image shows a screenshot of a website for the Willamette Water Supply Program. The header features the logo "Willamette Water Supply Our Reliable Water" and a search bar. A navigation menu includes links for "MID-WILLAMETTE RIVER", "THE PROGRAM", "QUICK FACTS", "NEWS ROOM", "CONSERVATION", "COMMUNITIES", and "CONTACT". The main content area has a large image of water being poured into a glass with the text "Safe drinking water is our #1 priority". To the right, there are three sections: "WHY IS MORE WATER NEEDED?", "WHY THE WILLAMETTE RIVER?", and "WHAT'S THIS PROJECT ABOUT?". The bottom of the page features three circular icons with corresponding text: "PROTECTING WATER QUALITY - SOURCE TO TAP", "PROJECT MAP", and "PROJECT UPDATE".

Willamette Water Supply
Our Reliable Water

Search

MID-WILLAMETTE RIVER THE PROGRAM QUICK FACTS NEWS ROOM CONSERVATION COMMUNITIES CONTACT

Safe drinking water is our #1 priority

WHY IS MORE WATER NEEDED?
There is enough water for today—but steps need to be taken now to have an adequate supply to meet future demands. Water needs in Washington County are projected to double by 2050 with new supplies needed as early as 2026. Developing an additional water supply through a partnership supports the region's plans for responsible growth within urban growth boundaries.
[READ MORE](#)

WHY THE WILLAMETTE RIVER?

WHAT'S THIS PROJECT ABOUT?

PROTECTING WATER QUALITY —SOURCE TO TAP
Safe drinking water is our top priority. Your drinking water is monitored and protected, from source to tap.

PROJECT MAP
Water Delivery System
Planning for the design of the water delivery system has just begun. The system will include a modified intake on the Willamette River, expanded treatment facility, new transmission line and water supply reservoirs.

PROJECT UPDATE
Preliminary Design Project to consider pipeline routes and reservoir locations is underway now.
[Learn more!](#)

Willamette Water Supply Program Governance

- Facilitated process to develop agreements needed to plan, design, construct, operate & maintain the new regional water supply system
- Three “groups” of participants
 - Existing Users – Wilsonville, Sherwood
 - Near-term Users (by 2026) – TVWD, Hillsboro
 - Future Users (after 2026) – Beaverton, Tigard, Tualatin
- Build on existing agreements and obligations
 - WRWC & Willamette WTP
- How to make it work for the region

Tualatin Valley Water District



Willamette Water Supply Program Governance

- Facilitator hired
- Meeting twice a month
- Senior staff and attorneys “in the room”
- Creation of Willamette Water Supply Council
- Identify key concepts by fall 2014
- Draft agreement(s) for consideration by city councils & boards by early-2015
- Complete before 124th Av pipeline construction award

Tualatin Valley Water District



Willamette Water Supply Program Program Administration & Coordination

- TVWD serving as Managing Partner
- TVWD Water Supply Program Director to plan, manage & facilitate program activities & projects
- TVWD-Hillsboro intergovernmental agreement for program planning and design (not construction)
- Joinder agreements with Beaverton, Tigard & Tualatin for participation in Preliminary Design Project
- Program budget planning & administration
- Billing of partners for cost shares & participation

Tualatin Valley Water District



Willamette Water Supply Program Program Administration & Coordination

- Program SharePoint site for coordination

WWSP Willamette Water Supply Program Central

Home Notebook Recent

Search this site

Home

Welcome!

WWSP Program Sites

✓ URL	
Program Administration	...
Program Calendar	...
Public Affairs	...
Public Outreach	...

WWSP Project Sites

✓ URL	
SW 124th Avenue Water Transmission Line Design	...
Willamette Water Supply System Preliminary Design	...

News and Events

Title
Public Affairs Underway
Public Affairs efforts began with the hiring of CFM December.
Public Outreach is underway with Barney Worth Te
We had our first workshop on January 15 and our v
development kicks off on January 21.

Quick Tip - Outlook Calendar Sync

Just a quick tip to help you sync the Program Cale
your Outlook Calendar. Please see the attached

Willamette Water Supply Program Program Administration & Coordination

- Program Management Planning



Tualatin Valley Water District



Questions

Mark Knudson, P.E.
Chief Executive Officer
Tualatin Valley Water District
markk@tvwd.org

Kevin Hanway
Director
Hillsboro Water
Kevin.Hanway@hillsboro-oregon.gov



Tualatin Valley Water District

