

Creating and Expanding Water Supply

An Oregon Perspective

Phil Ward
Director



www.wrd.state.or.us



Why Does Oregon Care?

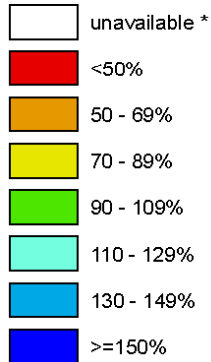
- Historically “wet” state
- Maybe we shouldn’t this year...



Oregon SNOTEL Current Snow Water Equivalent (SWE) % of Normal

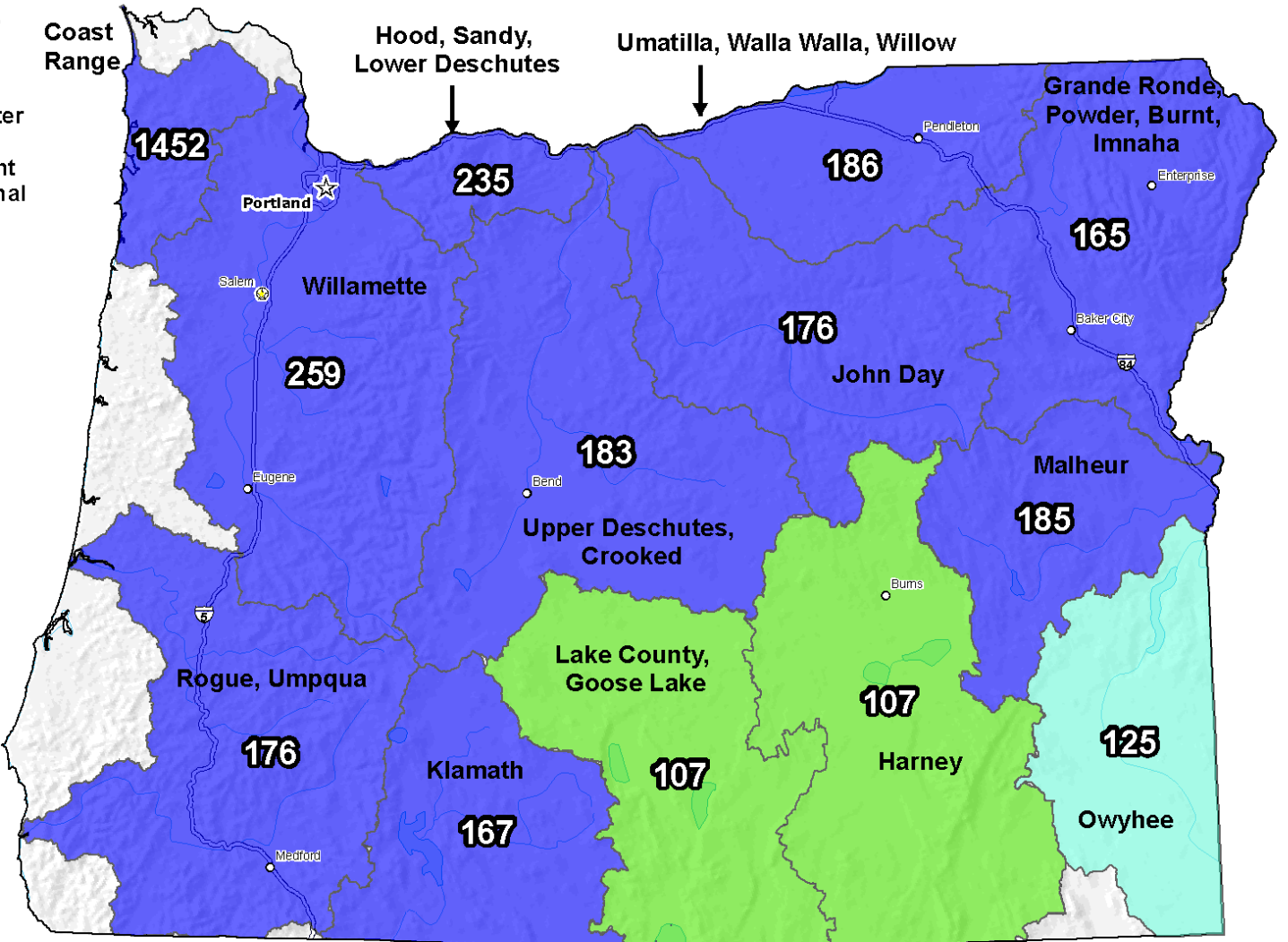
Apr 28, 2008

Current Snow Water Equivalent (SWE) Basin-wide Percent of 1971-2000 Normal

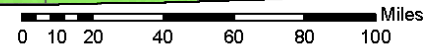


* Data unavailable at time of posting or measurement is not representative at this time of year

**Provisional Data
Subject to Revision**



The snow water equivalent percent of normal represents the current snow water equivalent found at selected SNOTEL sites in or near the basin compared to the average value for those sites on this day. Data based on the first reading of the day (typically 00:00).



Prepared by the USDA/NRCS National Water and Climate Center
Portland, Oregon <http://www.wcc.nrcs.usda.gov/gis/>
Based on data from <http://www.wcc.nrcs.usda.gov/reports/>
Science contact: Tom.Pagano@por.usda.gov 503 414 3010

We Are Water Short

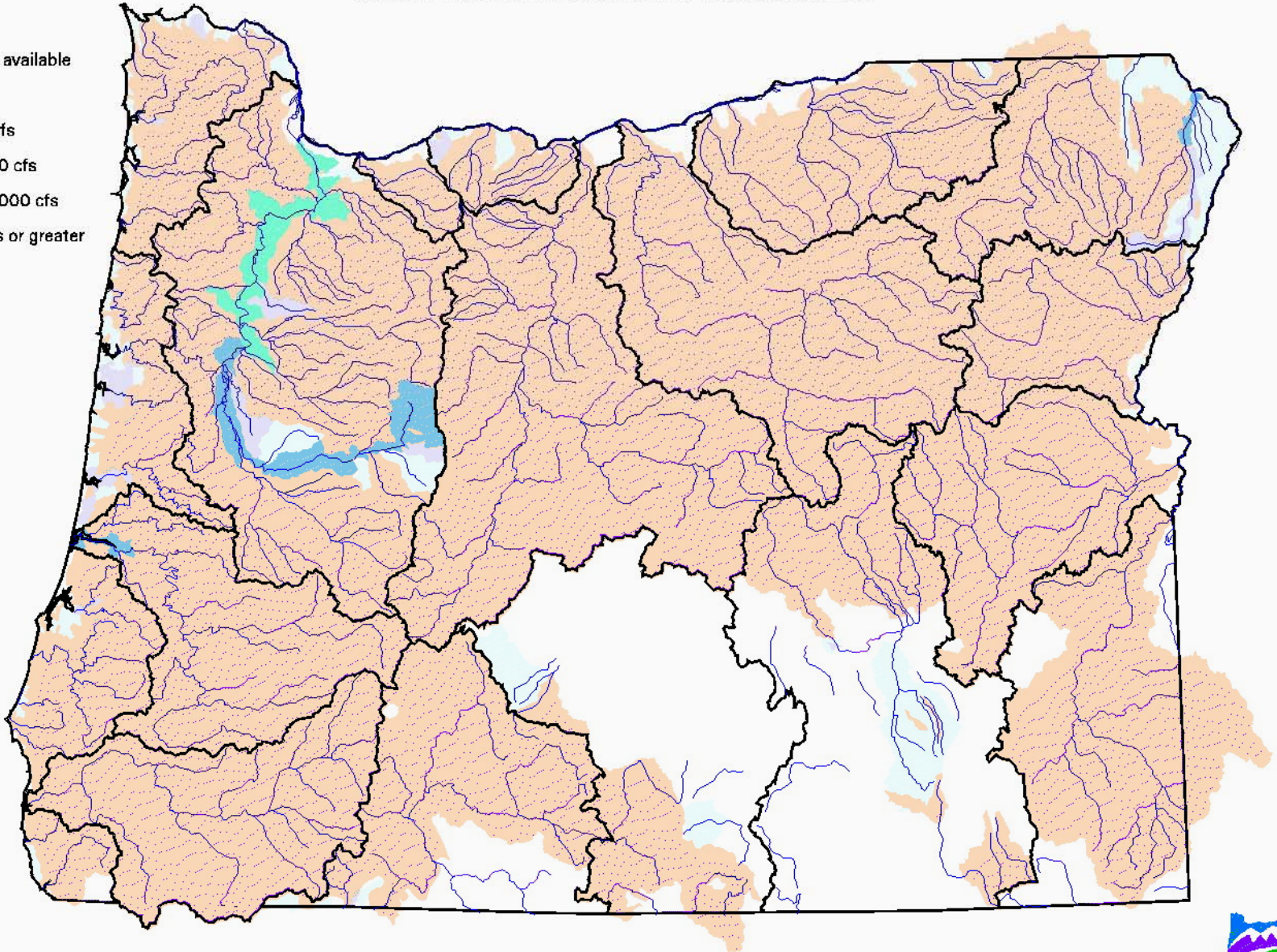
- Always have been
- Most precipitation outside the growing season
- Surface water fully allocated in summer



AUGUST AVAILABLE STREAMFLOW

Streamflow calculated at 80% exceedance

- No data
- No water available
- 1 - 10 cfs
- 11 - 100 cfs
- 101 - 1000 cfs
- 1001 - 10000 cfs
- 10001 cfs or greater

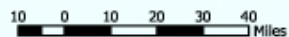


We Are Water Short...

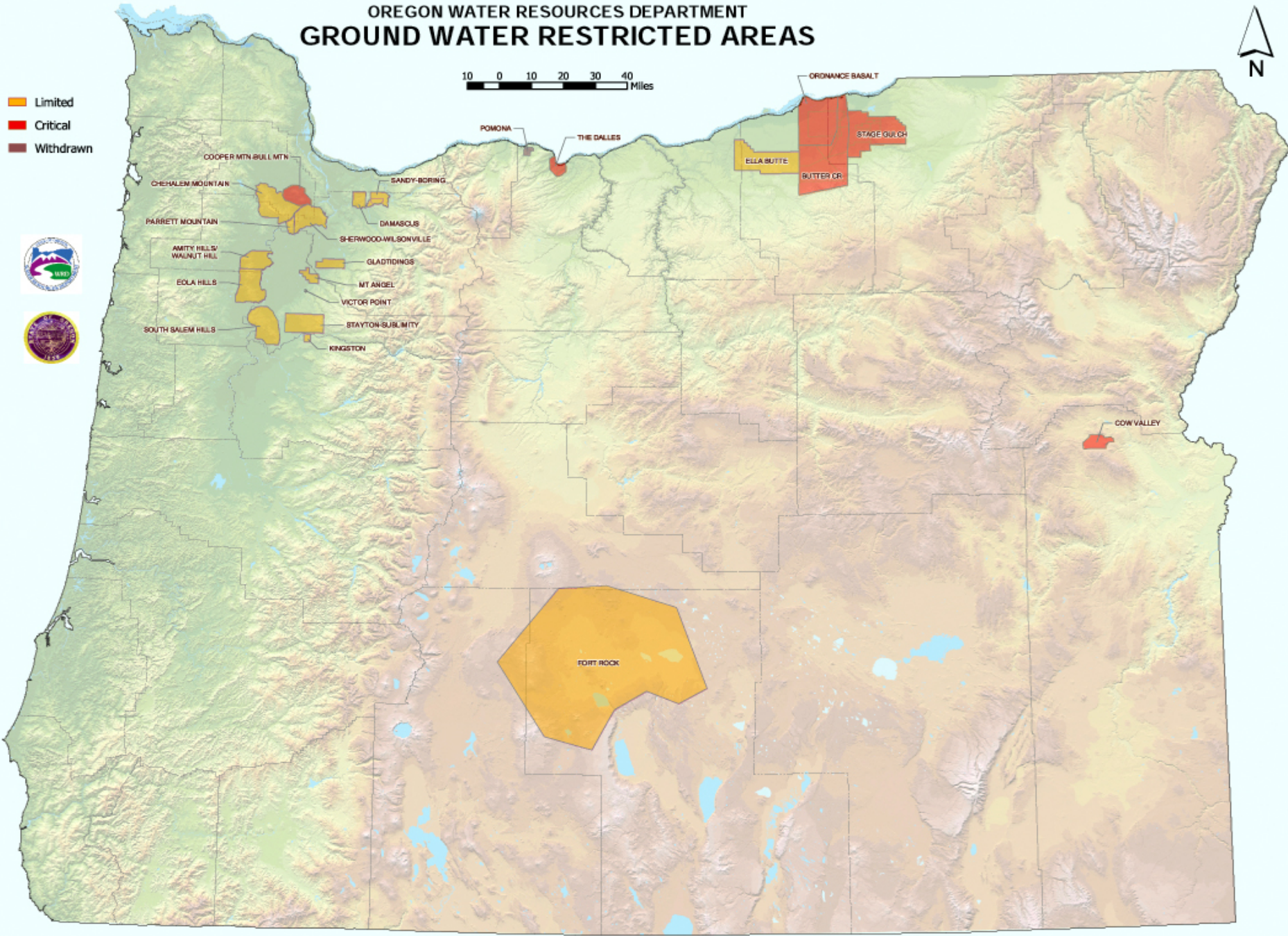
- **Ground water is showing significant stress**



OREGON WATER RESOURCES DEPARTMENT GROUND WATER RESTRICTED AREAS



- Limited
- Critical
- Withdrawn



We Are Water Short...

- Not meeting instream needs
- Climate change is looming
- Need is both East *and* West sides
- Precipitated significant recent legislation



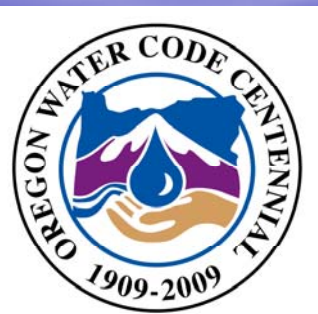
What Is Oregon Doing?

- **Supply Plan Survey**
- **Led to OWSCI**
 - Demand survey
 - Storage opportunity inventory
 - Conservation opportunity inventory
 - Basin yield analysis
 - Local planning grants--\$\$
 - Data foundation for *long-term plan*



What Is Oregon Doing?

- **Senate Bill 1069 (2008 Session)**
 - Water supply feasibility grants
 - \$1.75 million
 - Umatilla Basin Aquifer Recovery Project
 - \$750 K
 - Nowhere is need greater
 - 300'—500' declines/15% of permitted use
 - Test feasibility of large scale recharge
- **Planning and Feasibility \$\$ - new tools**



What Is Oregon Doing?

- **Governor's H₂O Initiative**
 - For 2009 Session
 - \$\$ for *Supply, Quality, Conservation, Health and Habitat*
 - Dedicated Fund Source
 - Part of Climate Change Initiative



Final Thoughts

- ***Big things*** ahead regarding Water Supply
 - Climate change increasing the urgency
- **Need for interstate collaboration**
- **Oregon committed to data driven approach**
- **Long term plan/strategy on its way!**





